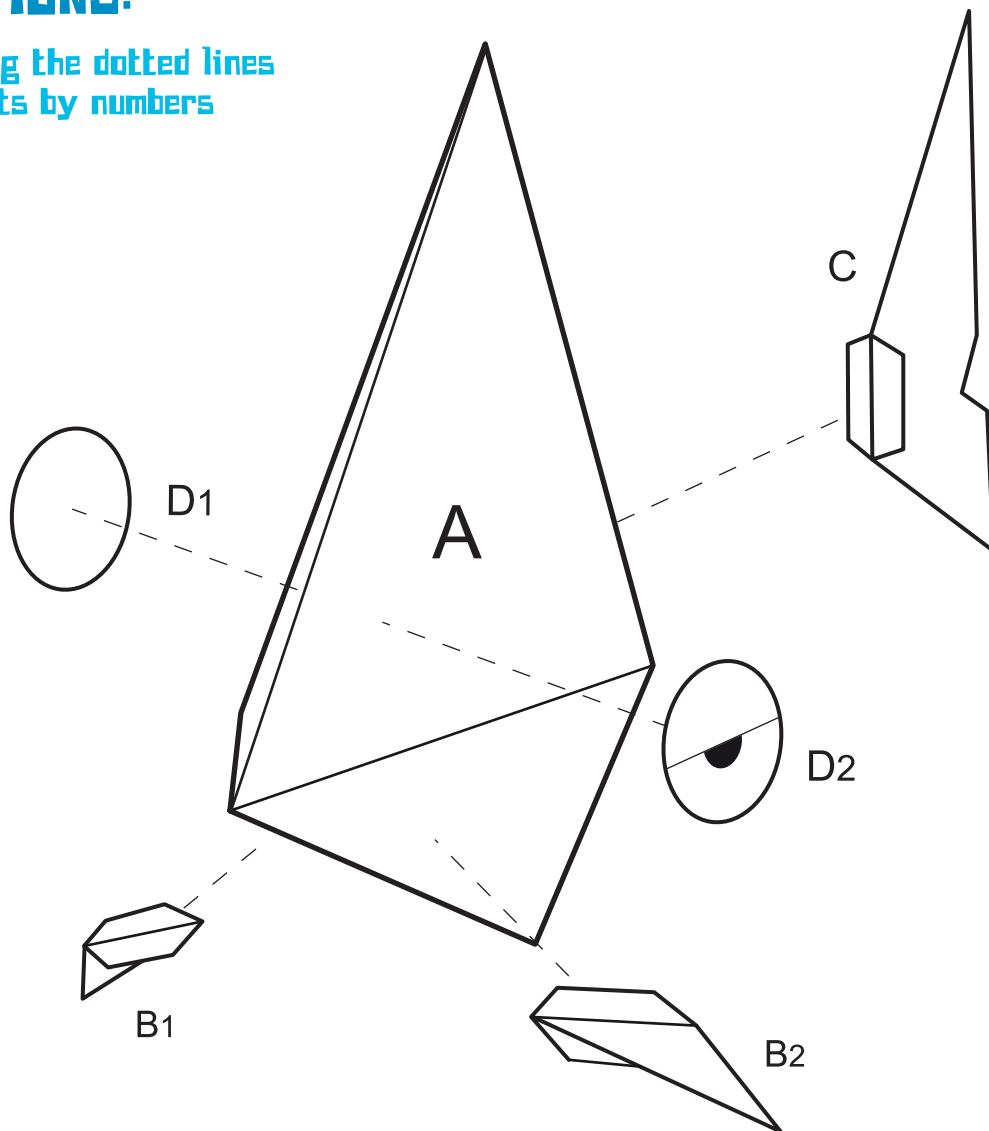




# TRIANGLE FISH

## INSTRUCTIONS:

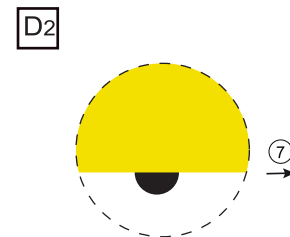
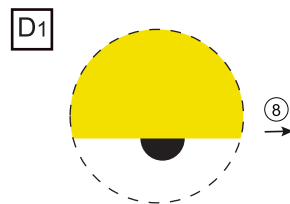
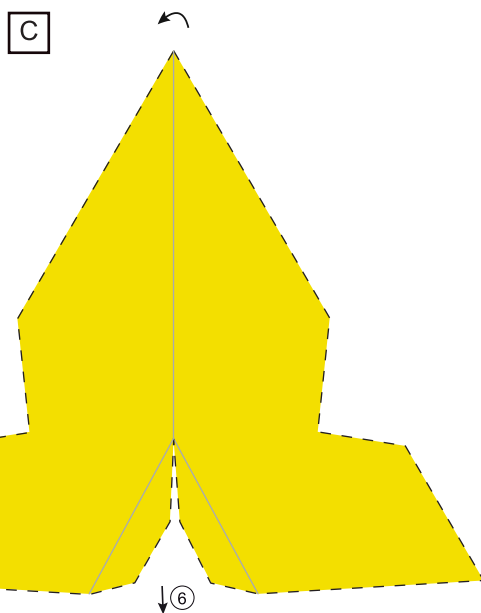
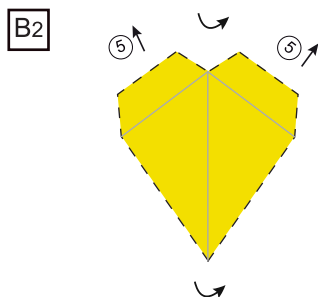
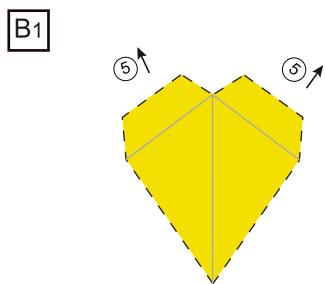
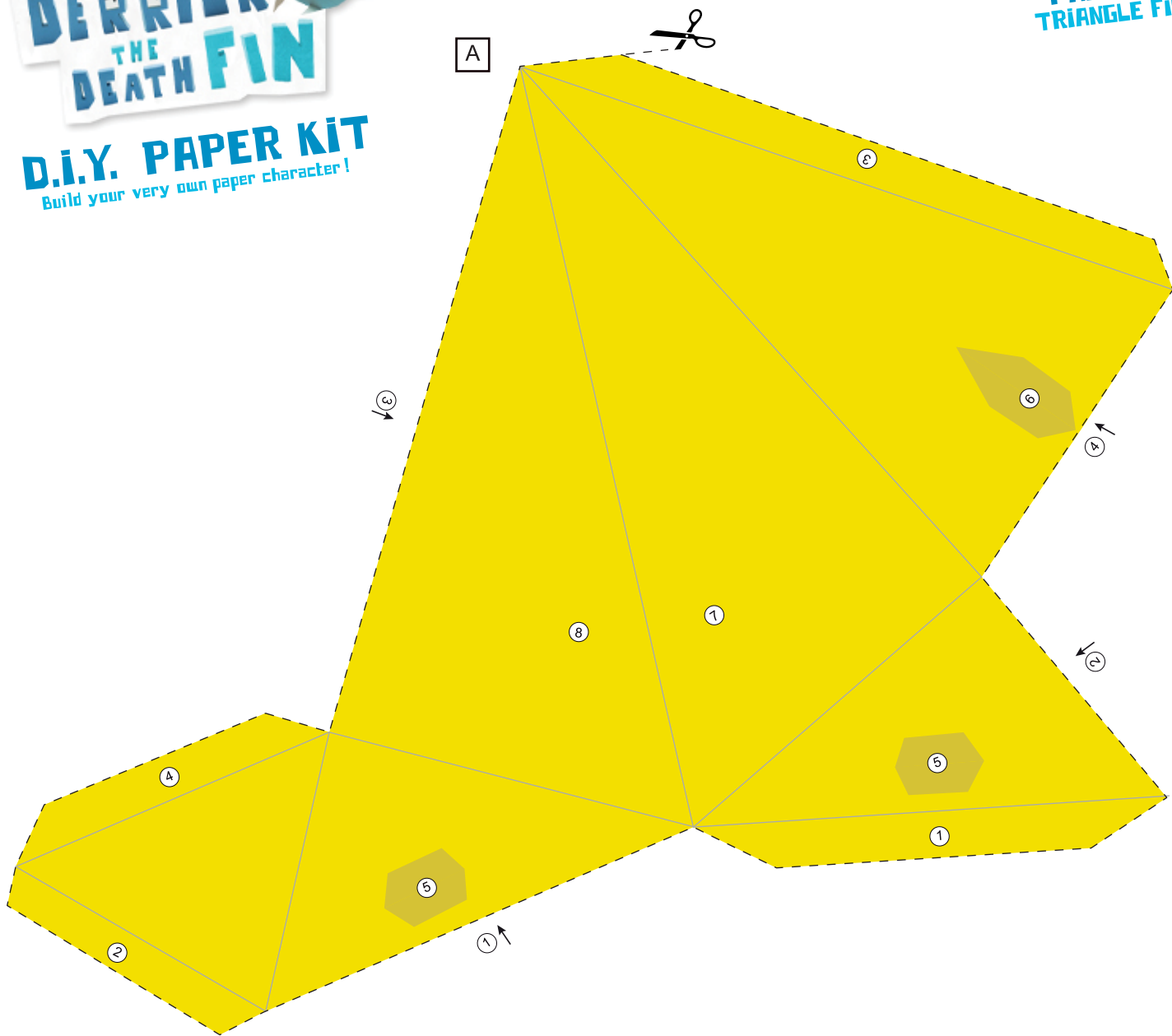
1. Cut out along the dotted lines
2. Connect parts by numbers
3. Enjoy!



More at: [www.derrickthedeathfin.com](http://www.derrickthedeathfin.com)

## YOU'LL NEED:





More at: [www.derrickthedeathfin.com](http://www.derrickthedeathfin.com)