

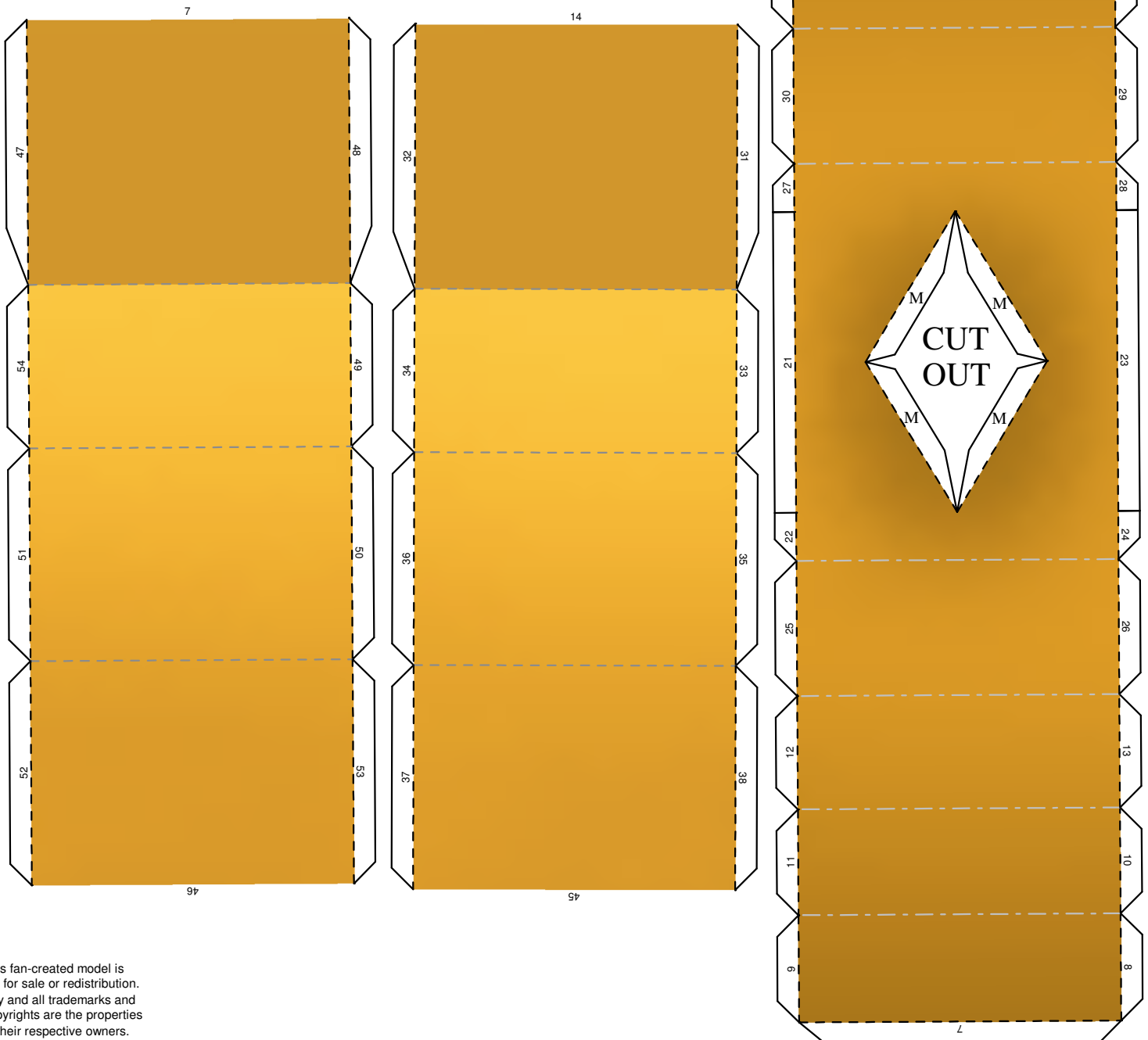


INSTRUCTIONS

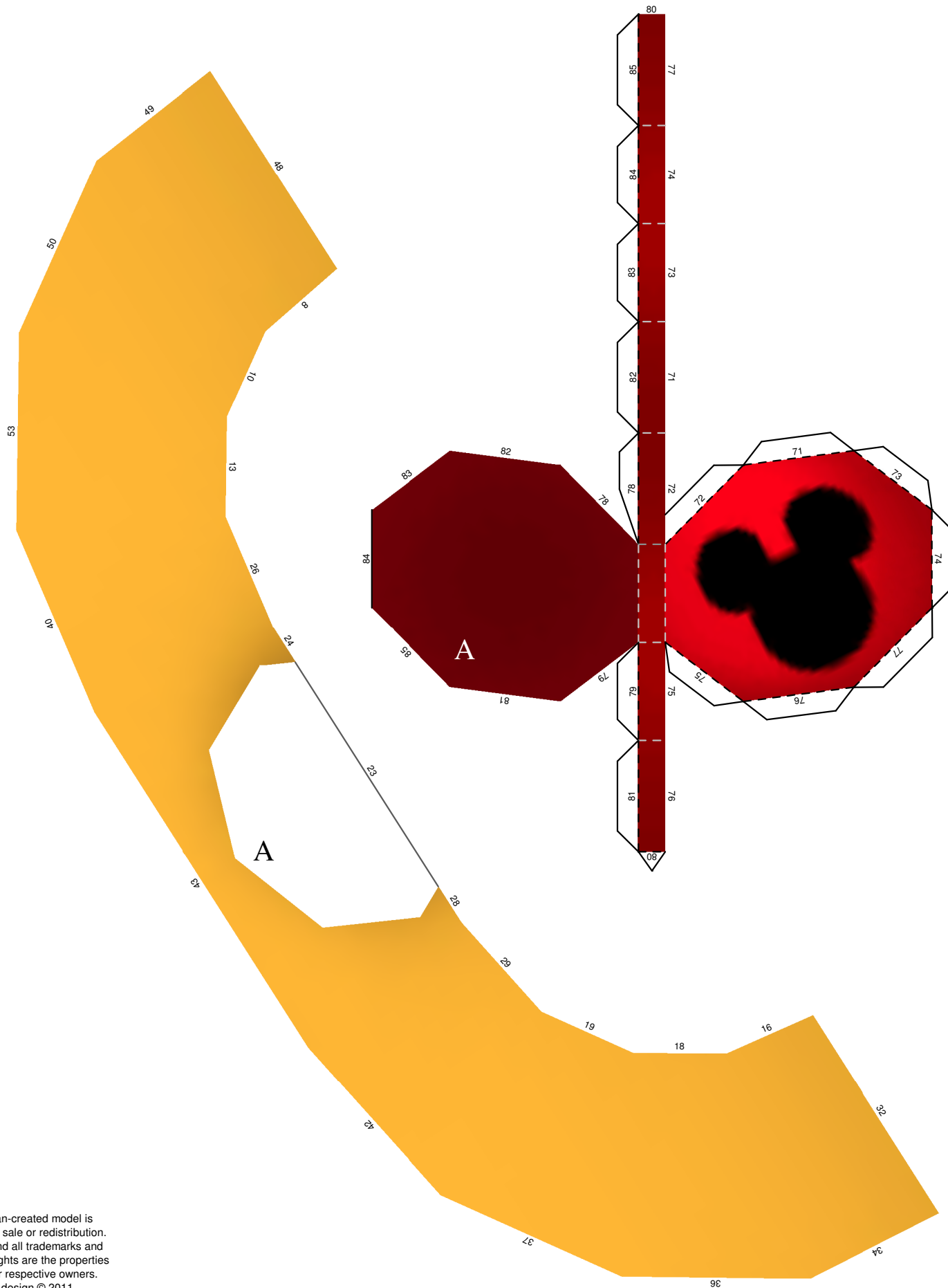
1. Print the template on cardstock.
2. Cut on the solid lines.
3. Make a mountain fold on the dashed lines.
4. Make a valley fold on the dash dot lines.
5. Assemble as indicated by the numbers & letters
6. Before folding, trace lightly along the folds with a ruler & an empty pen or dull exacto type knife for cleaner, more angular folds.
7. Glue sparingly at the flaps.

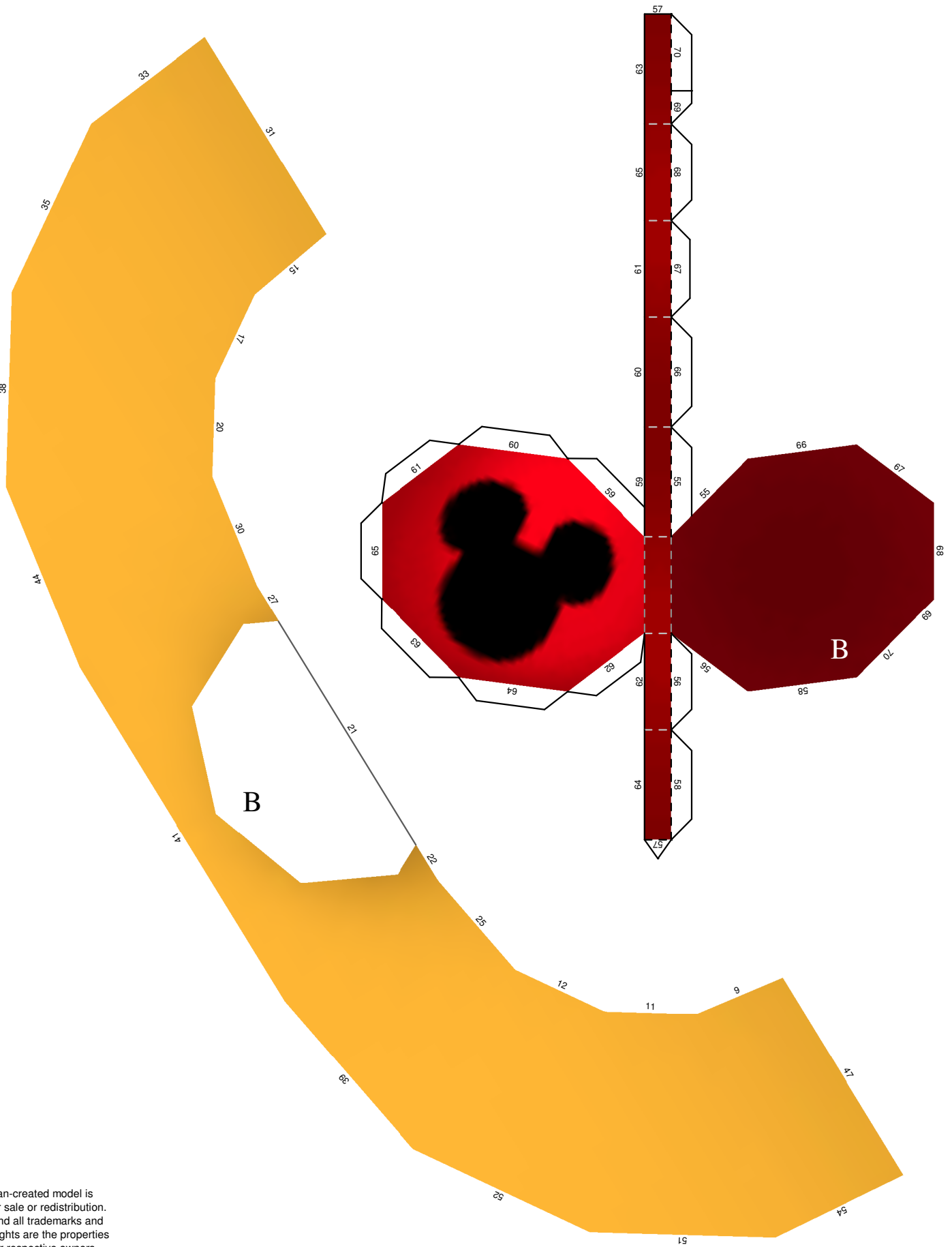
Dream Sword

from the KH2 video game
1:1 Scale

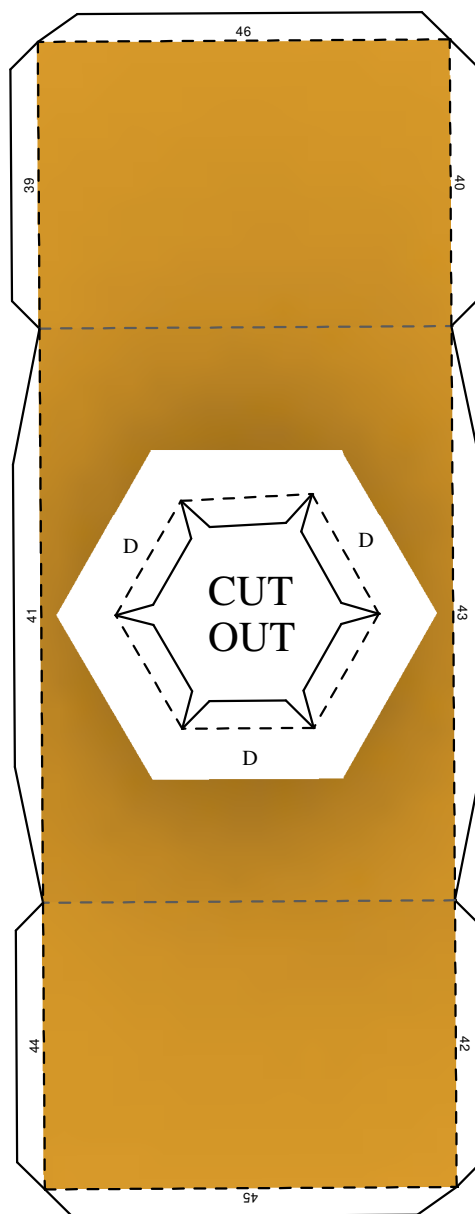
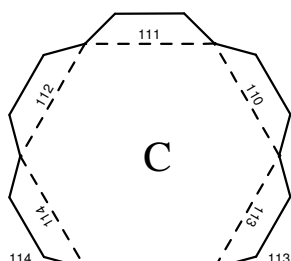
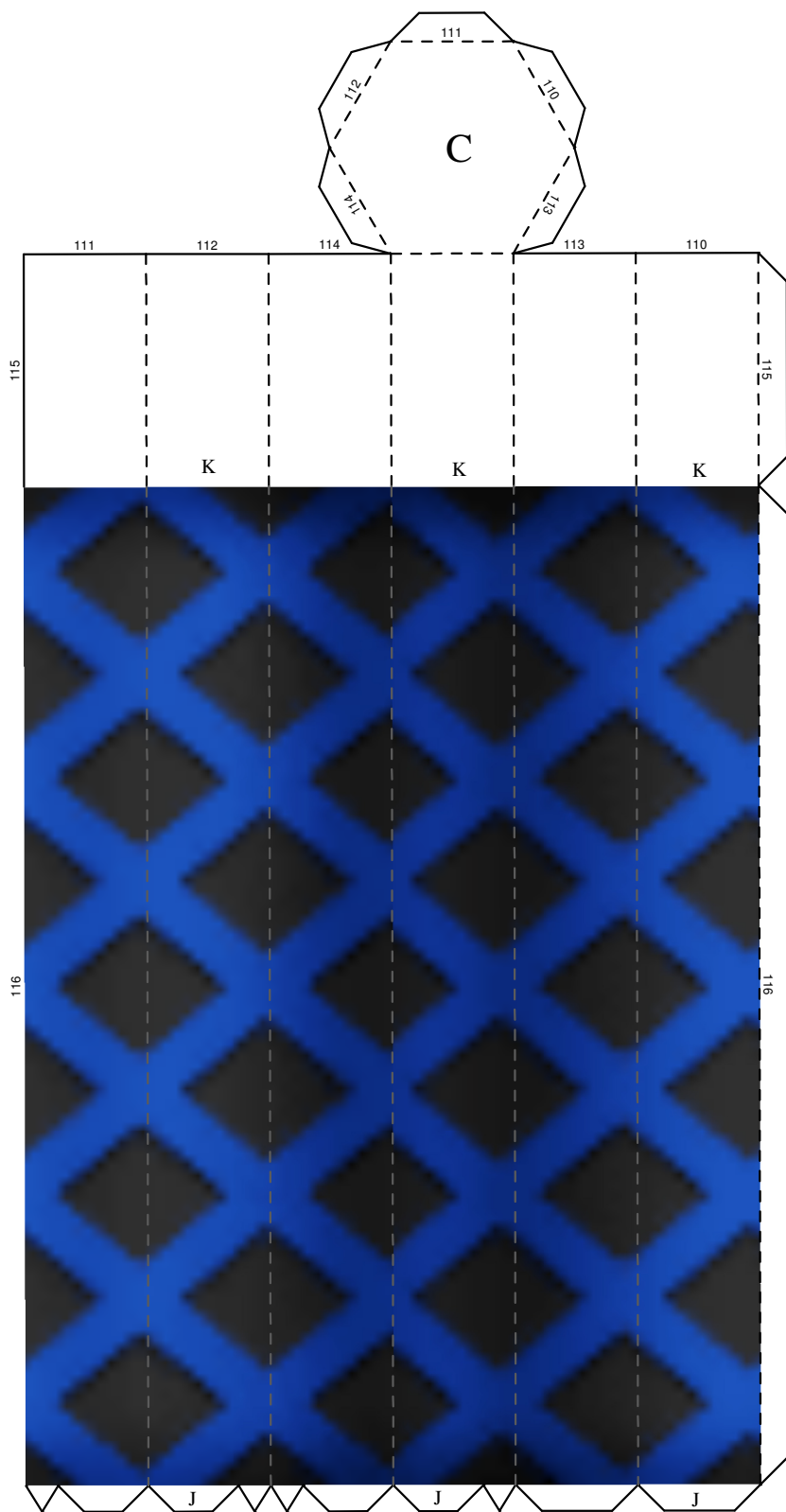


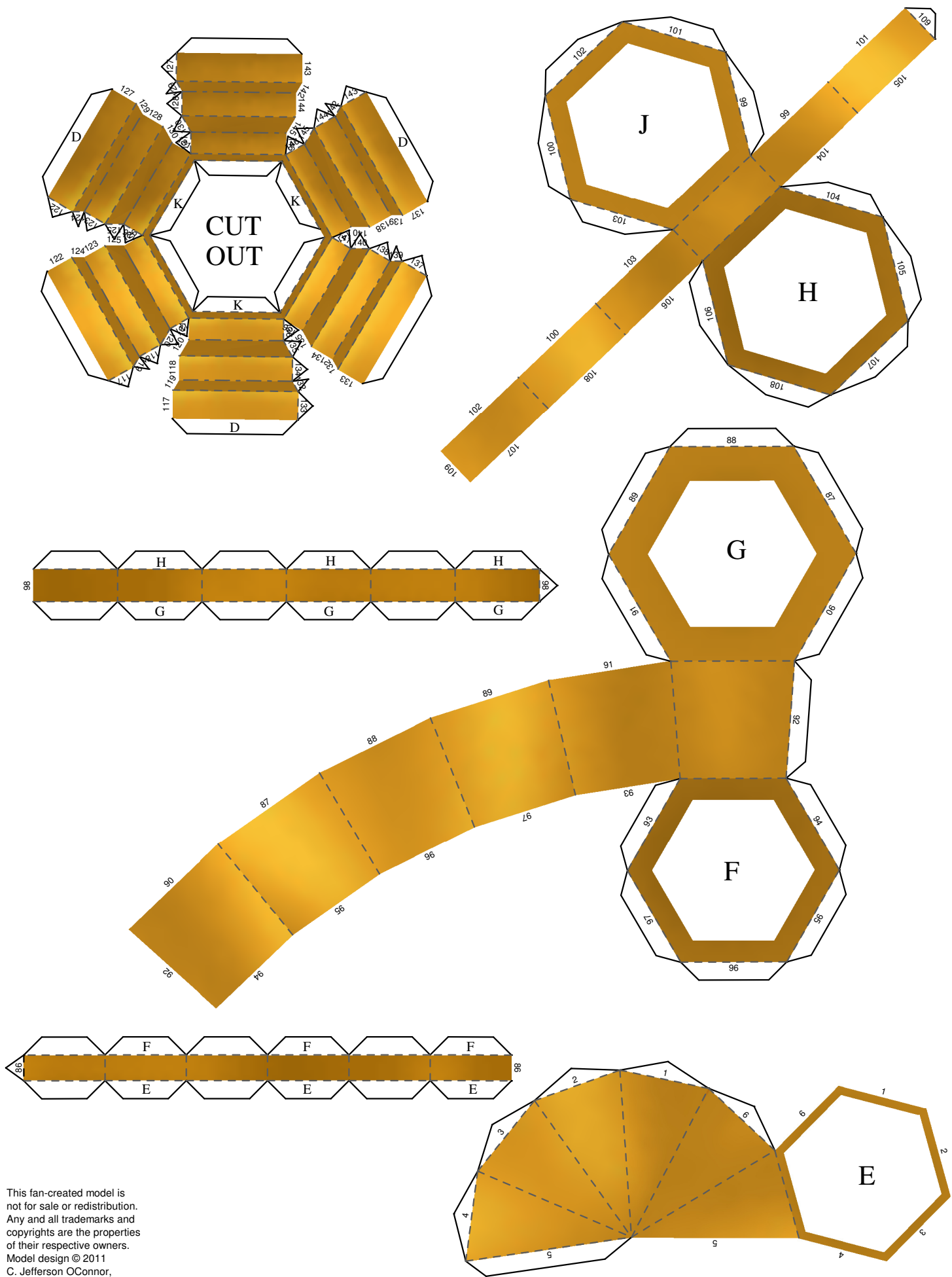
This fan-created model is not for sale or redistribution. Any and all trademarks and copyrights are the properties of their respective owners. Model design © 2011 C. Jefferson OConnor, www.tektonten.blogspot.com



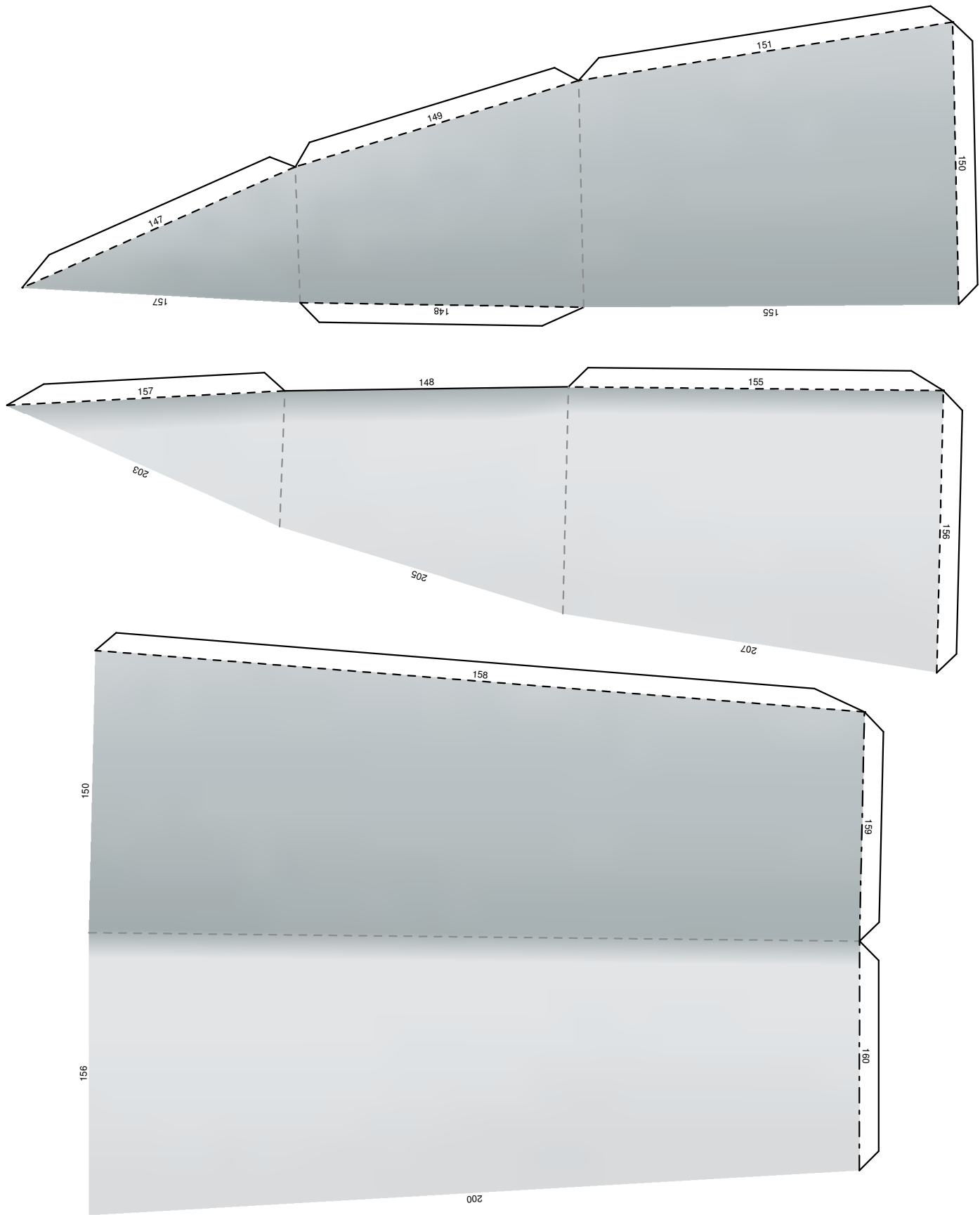


This fan-created model is not for sale or redistribution. Any and all trademarks and copyrights are the properties of their respective owners. Model design © 2011 C. Jefferson OConnor, www.tektonten.blogspot.com

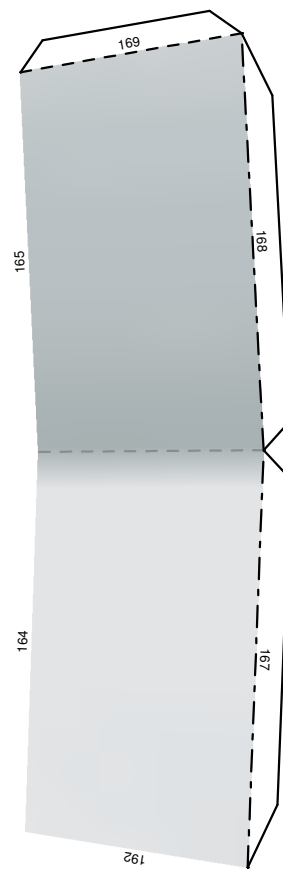
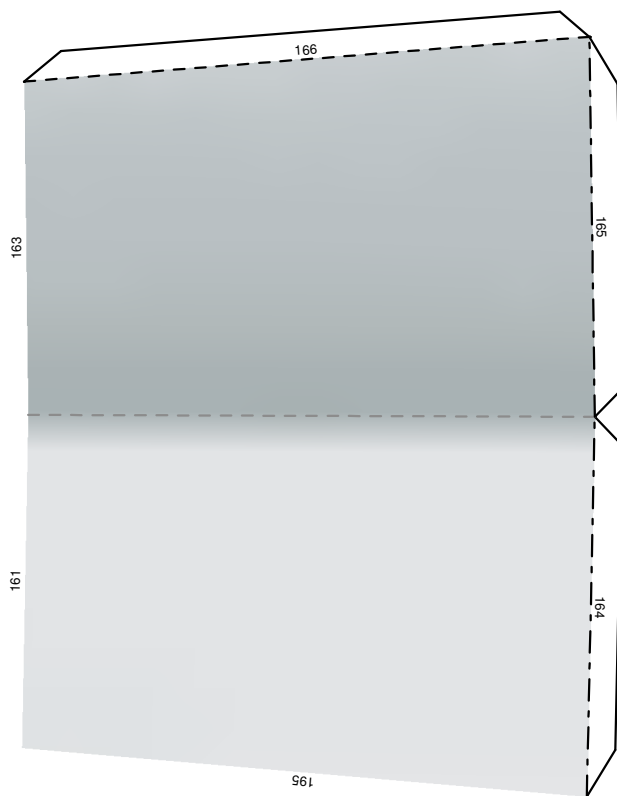
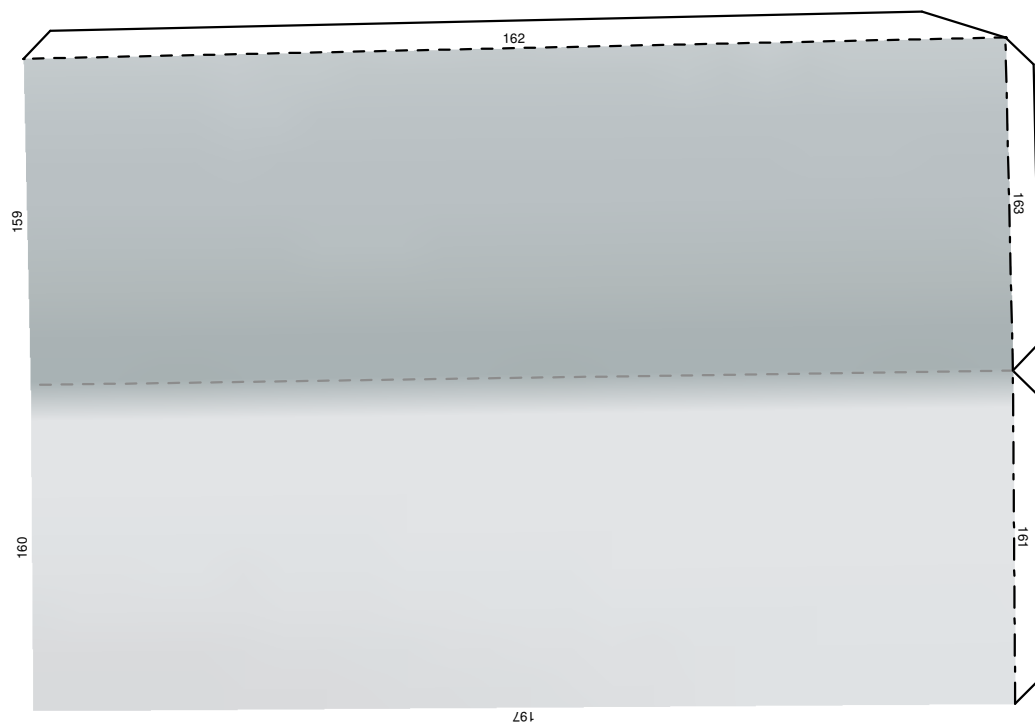


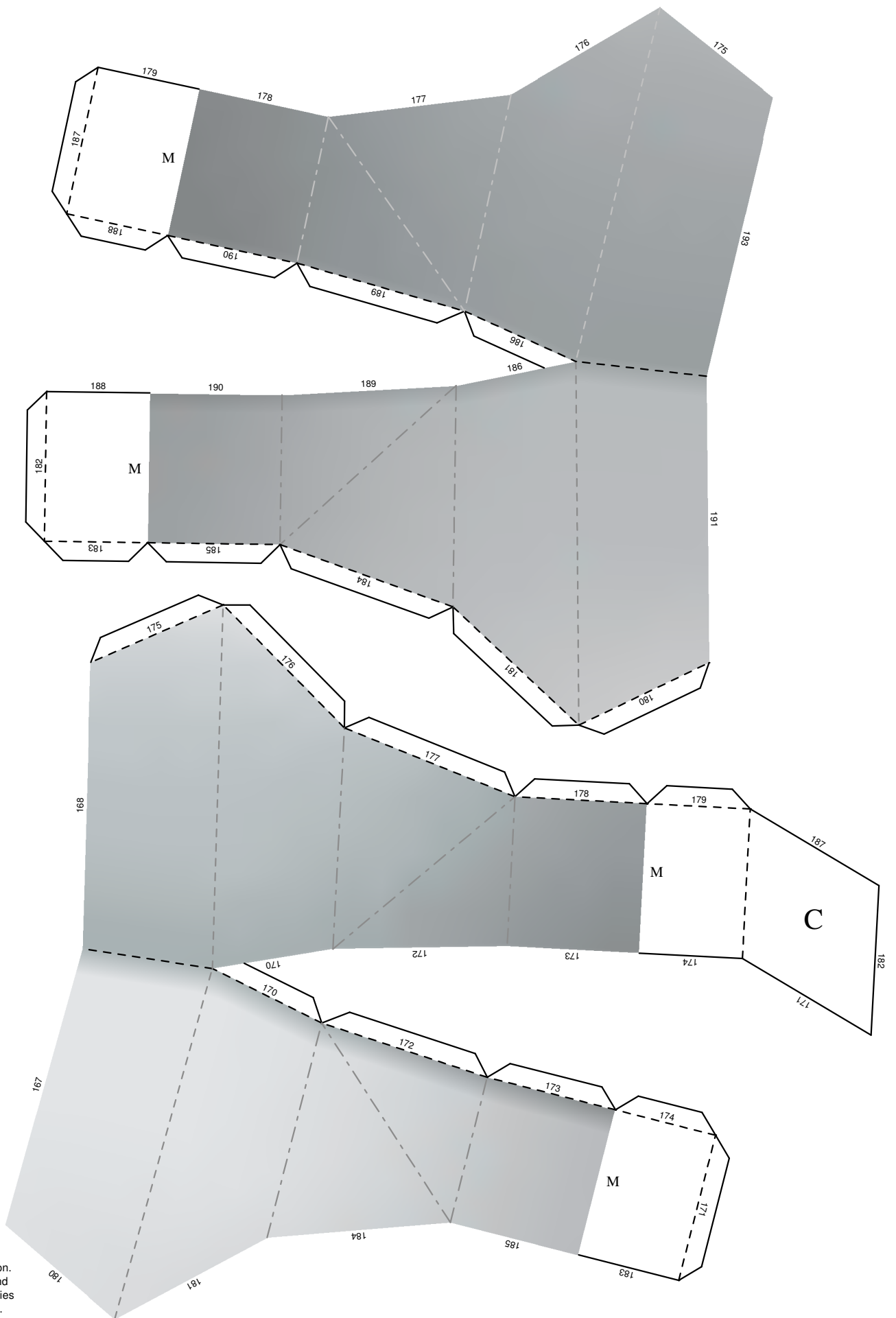


This fan-created model is not for sale or redistribution. Any and all trademarks and copyrights are the properties of their respective owners. Model design © 2011 C. Jefferson OConnor, www.tektonten.blogspot.com



This fan-created model is not for sale or redistribution. Any and all trademarks and copyrights are the properties of their respective owners. Model design © 2011 C. Jefferson OConnor, www.tektonten.blogspot.com





This fan-created model is not for sale or redistribution. Any and all trademarks and copyrights are the properties of their respective owners. Model design © 2011 C. Jefferson OConnor, www.tektonten.blogspot.com

