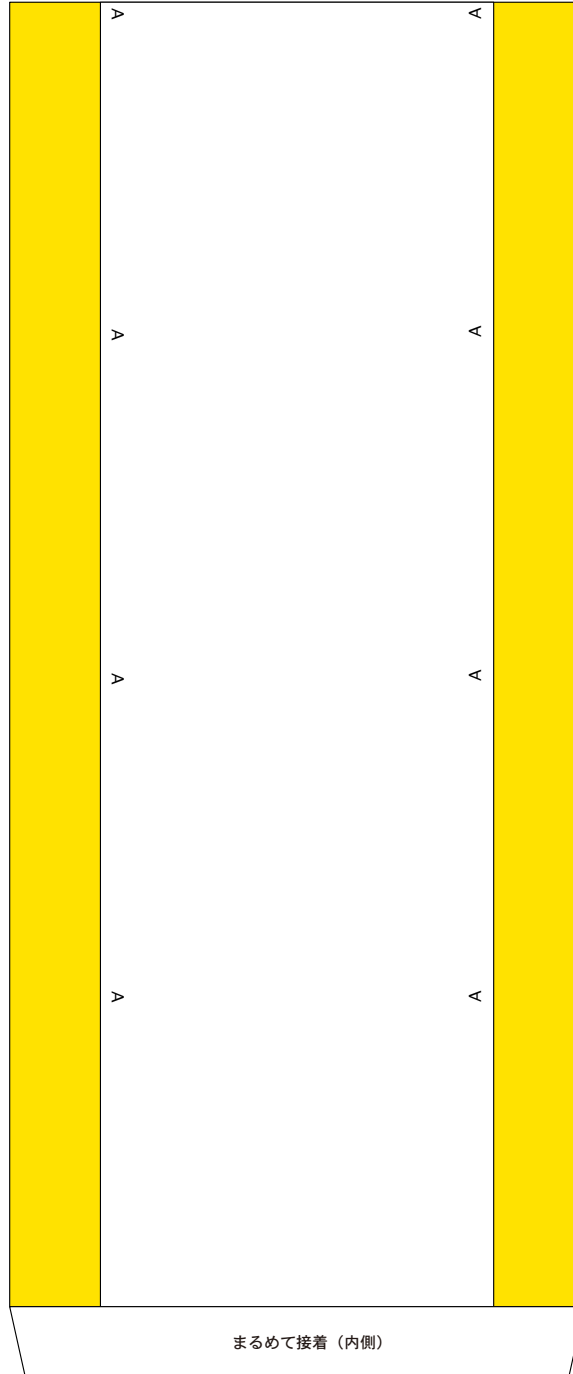
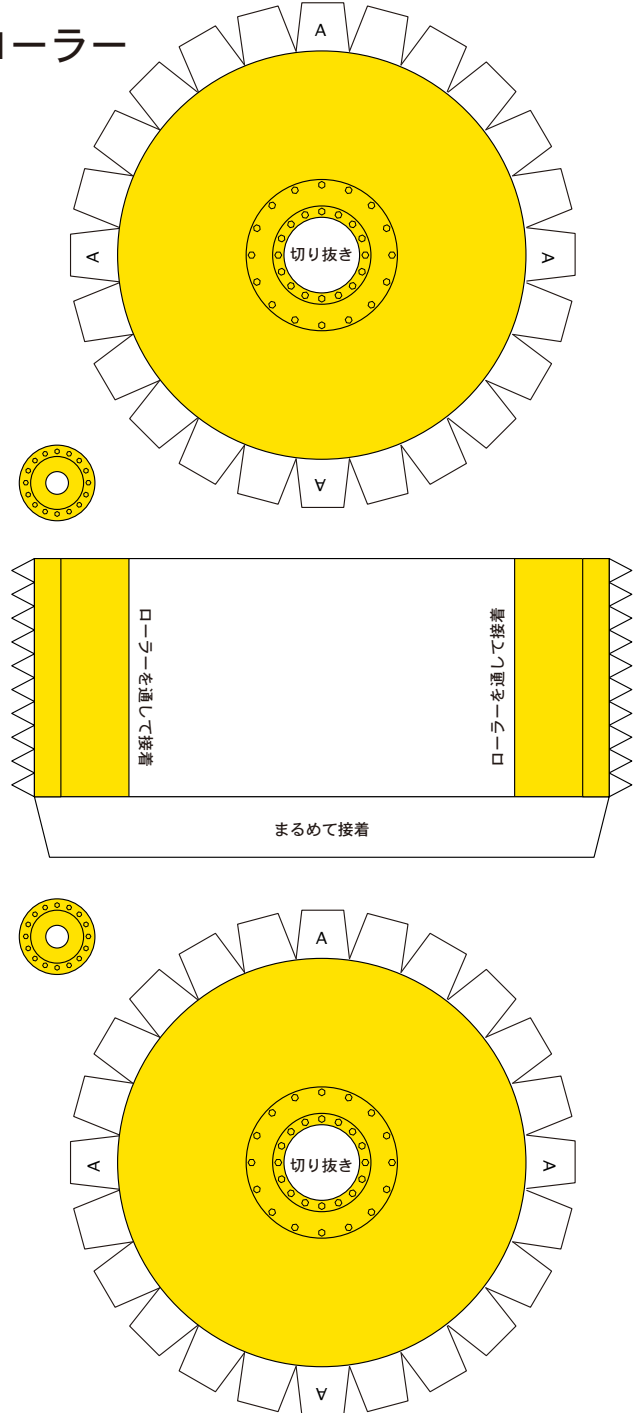


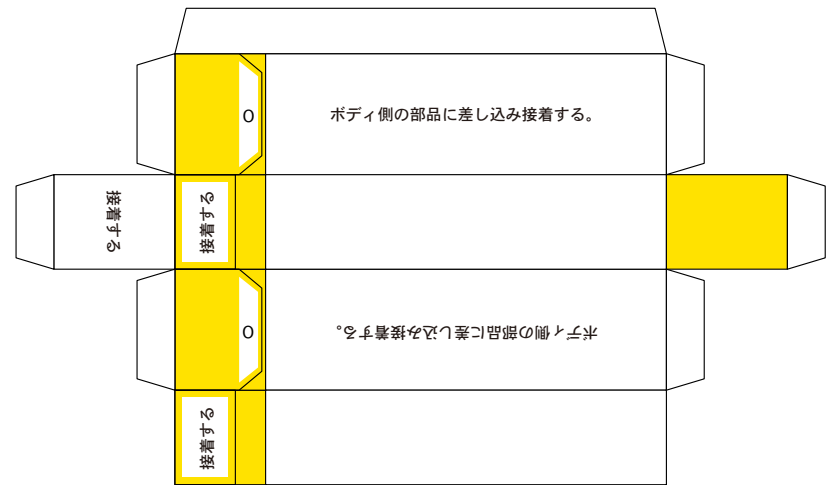
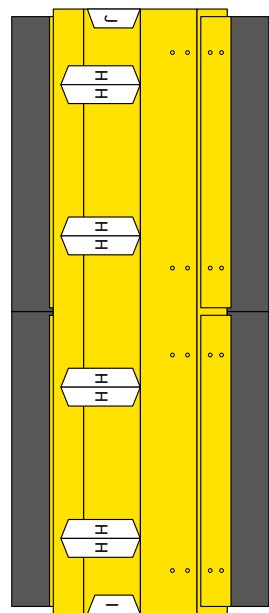
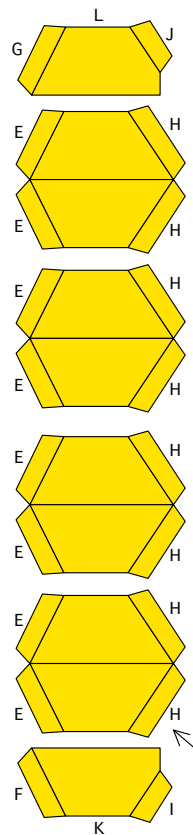
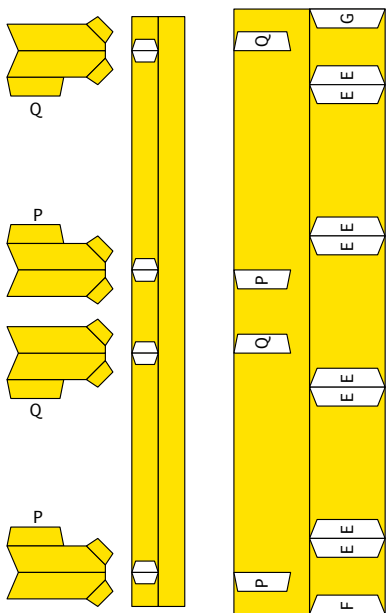
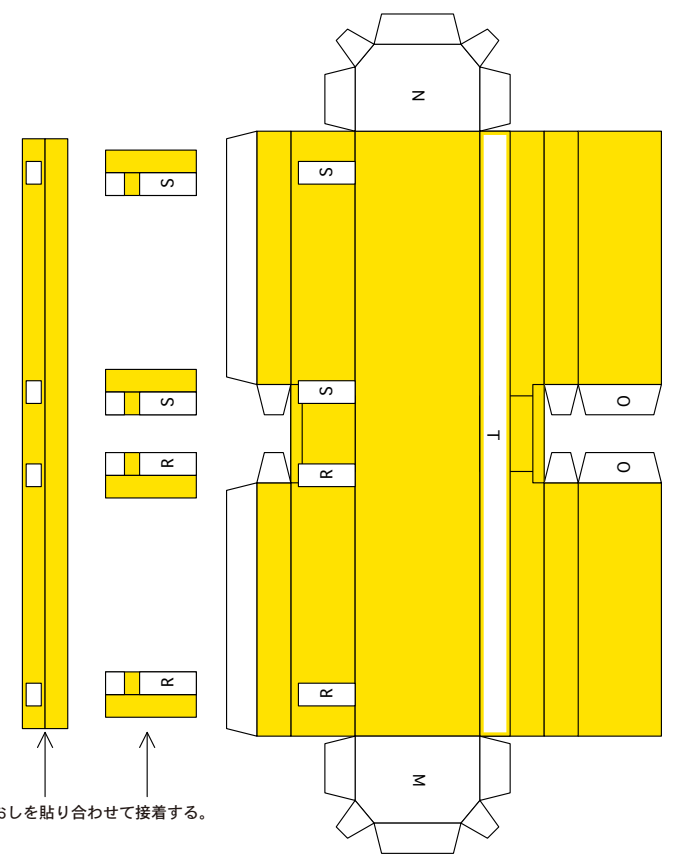
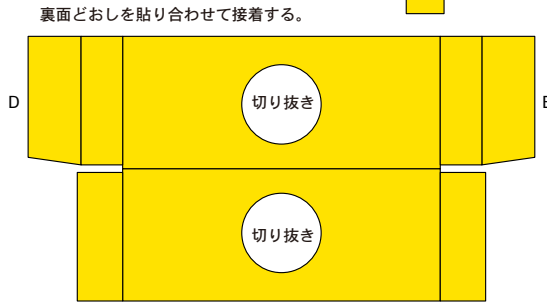
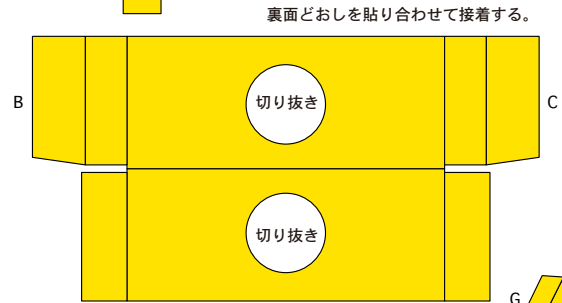
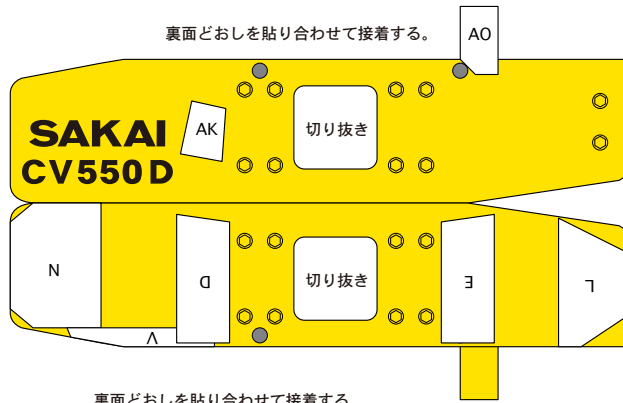
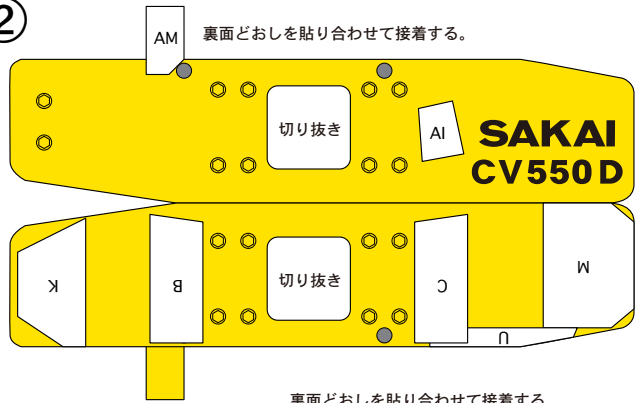
①



ローラー



②



裏面どおしを貼り合わせて接着する。

裏面どおしを貼り合わせて接着する。

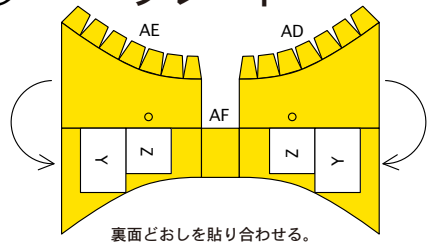
裏面どおしを貼り合わせて接着する。

ボディ側の部品に差し込み接着する。

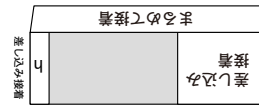
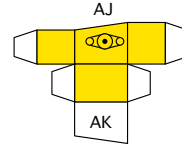
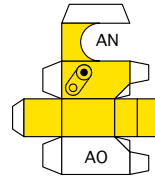
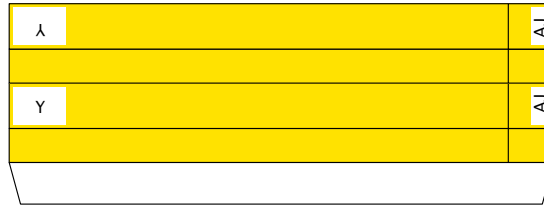
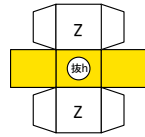
ボディ側の部品に差し込み接着する。

③

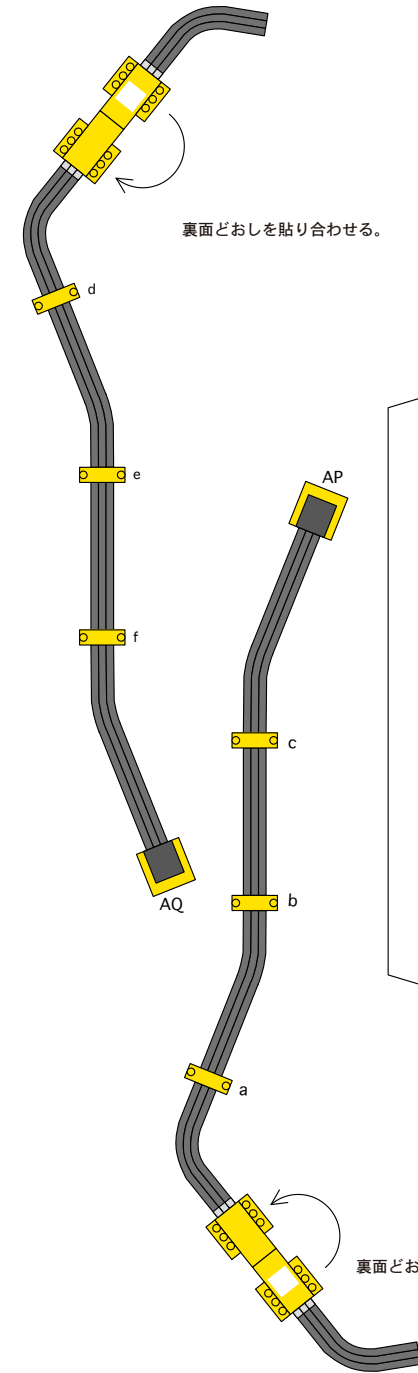
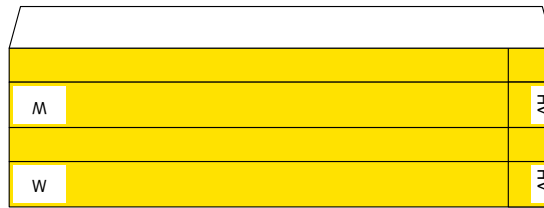
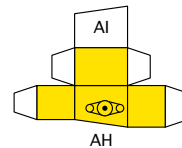
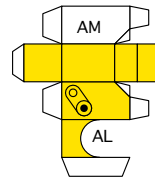
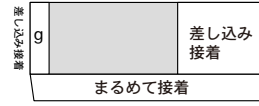
ブレード



裏面どおしを貼り合わせる。

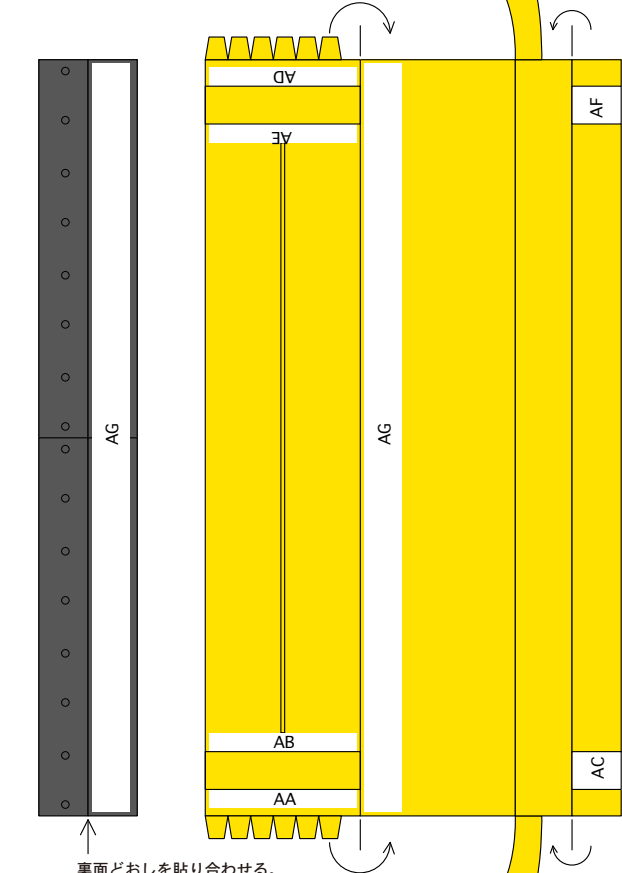


爪楊枝に巻きつけて接着する。

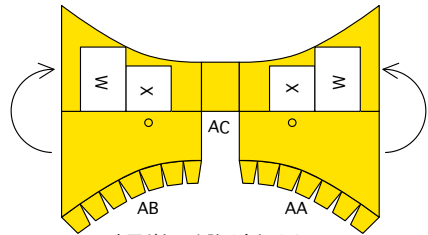


裏面どおしを貼り合わせる。

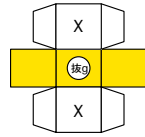
裏面どおしを貼り合わせる。



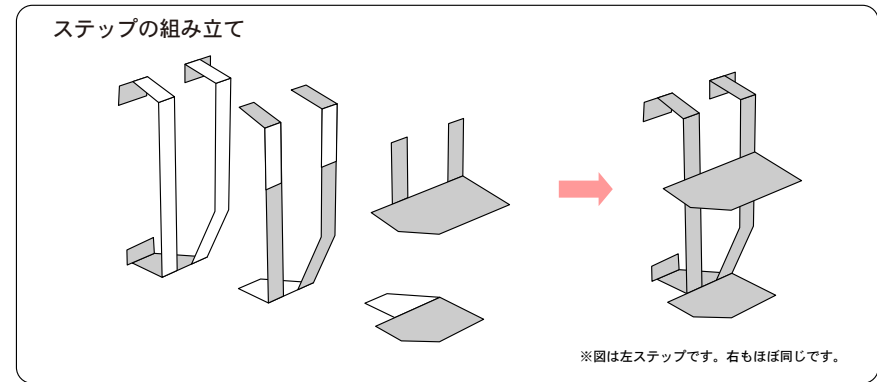
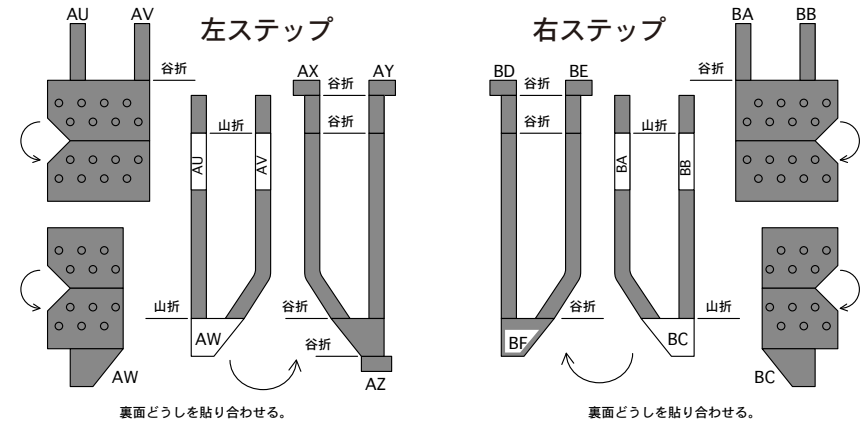
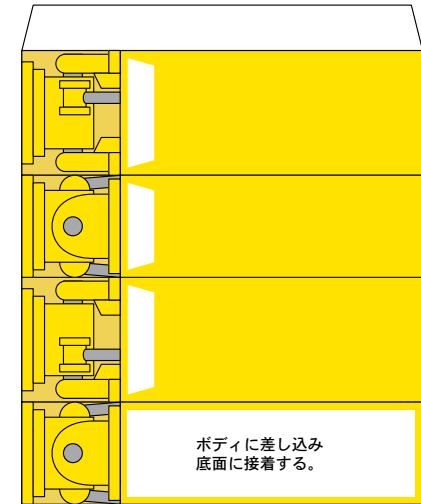
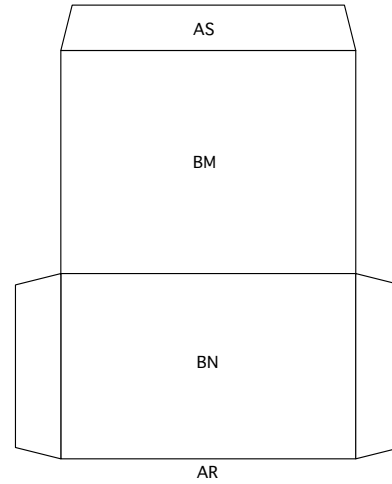
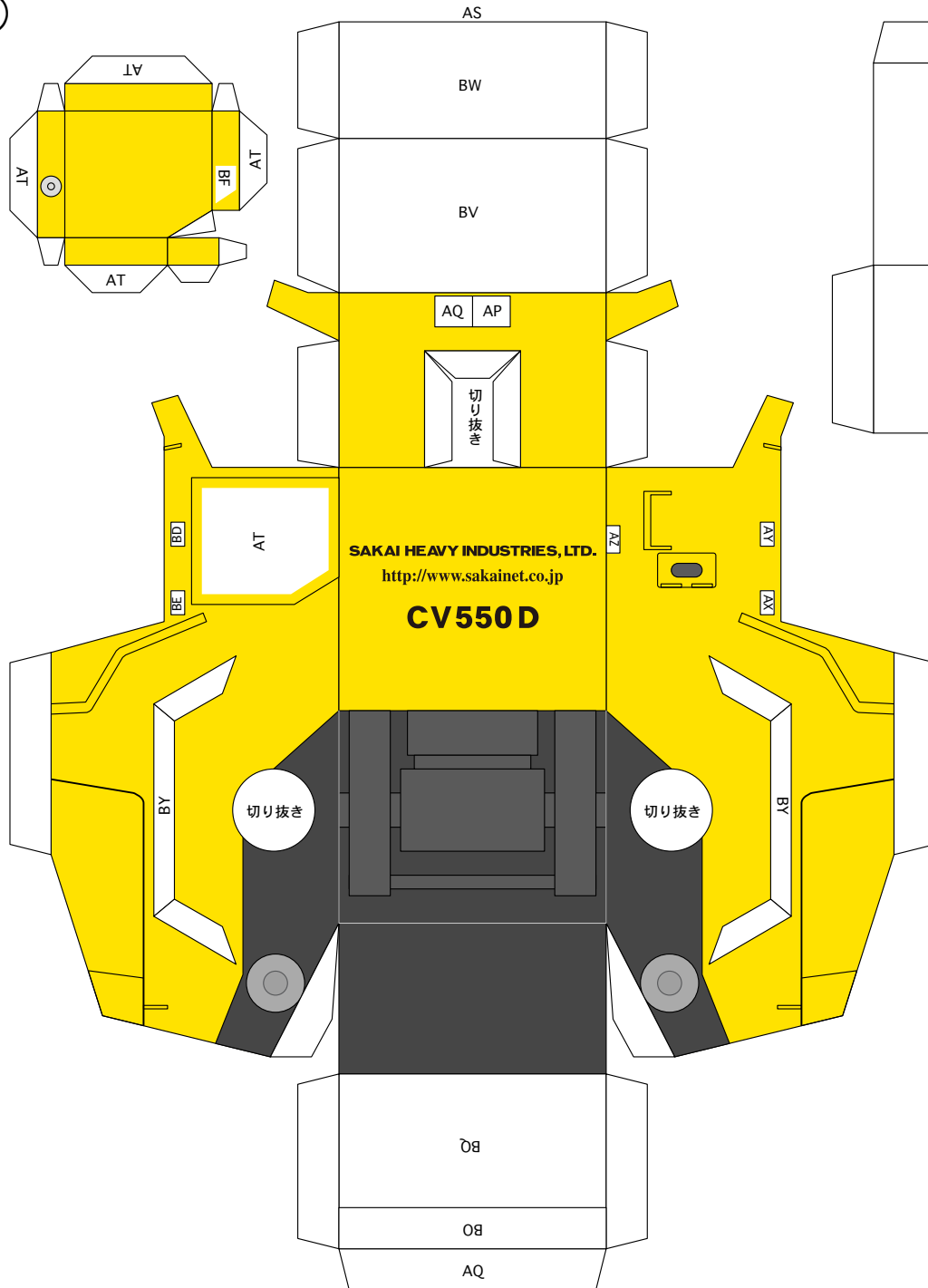
裏面どおしを貼り合わせる。



裏面どおしを貼り合わせる。



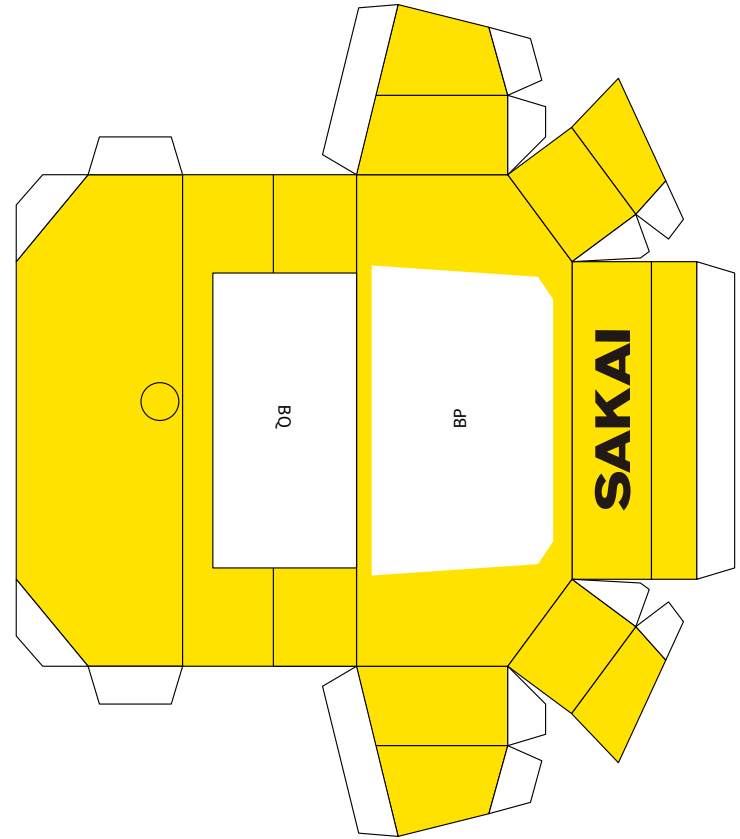
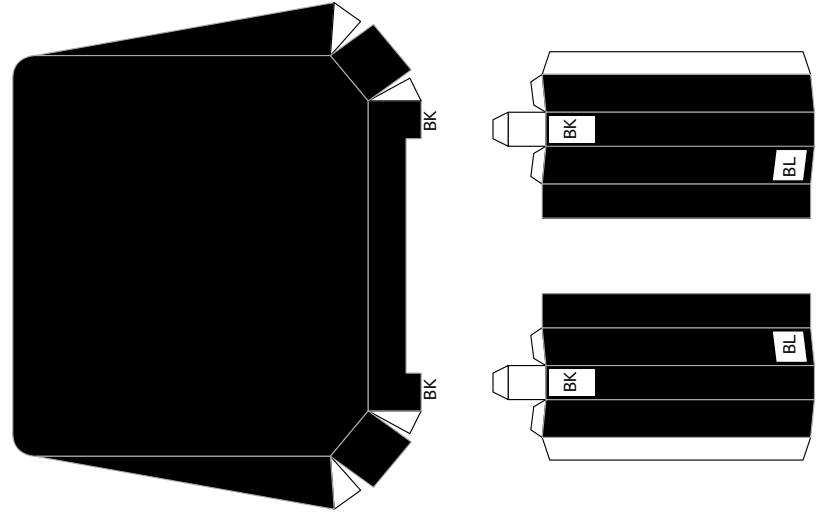
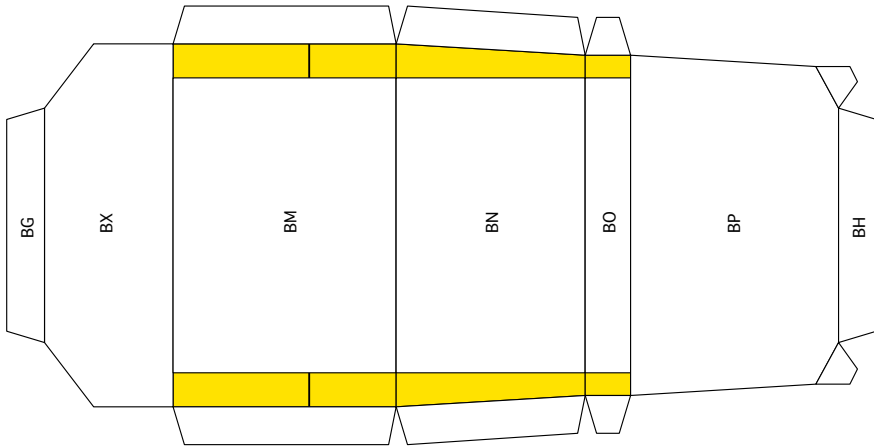
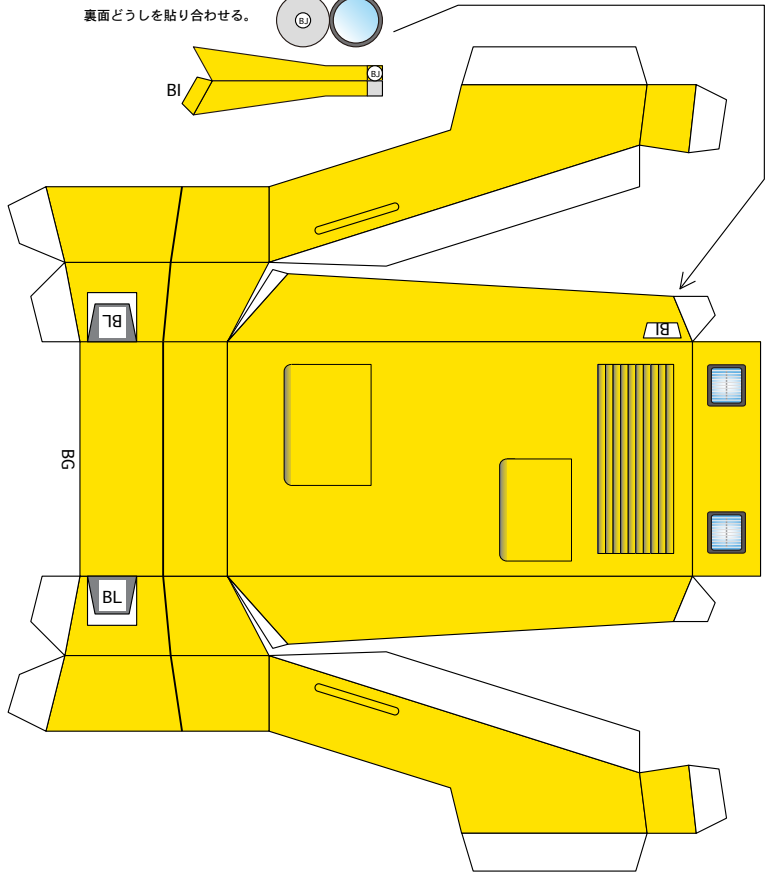
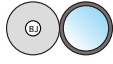
4



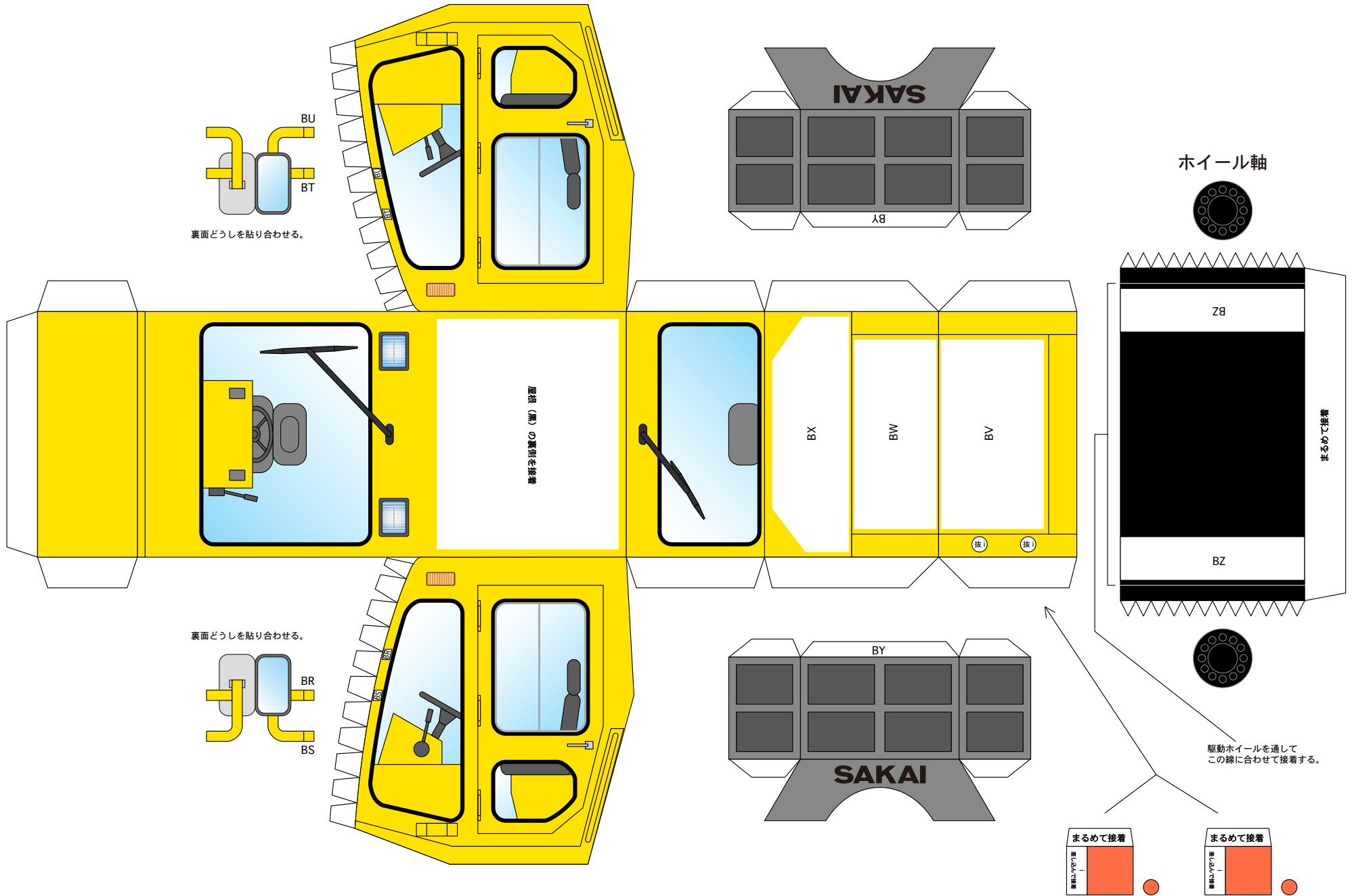
※図は左ステップです。右もほぼ同じです。

5

裏面どうしを貼り合わせる。

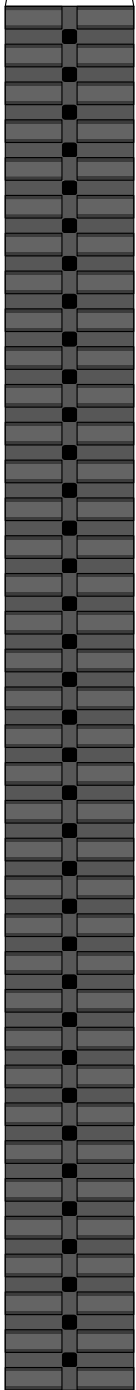


⑥

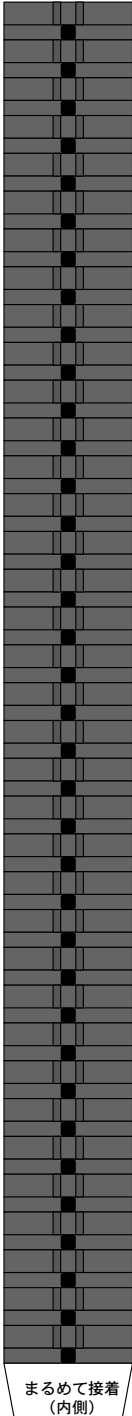


7

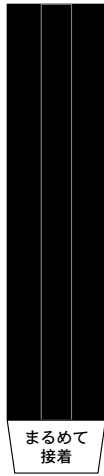
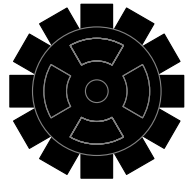
まるめて接着
(外側)



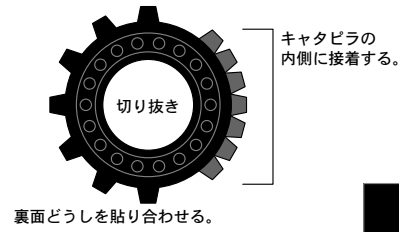
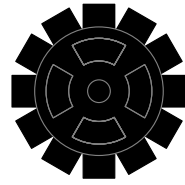
キャタピラとホイール (左)



まるめて接着
(内側)

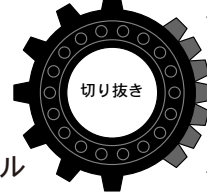


まるめて接着



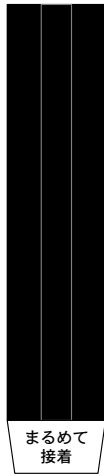
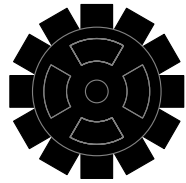
キャタピラの
内側に接着する。

裏面どうしを貼り合わせる。

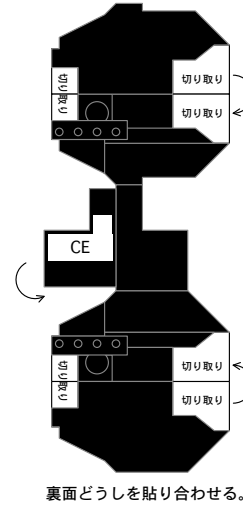
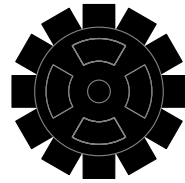


駆動ホイール

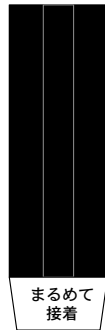
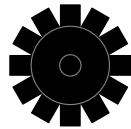
ホイール軸を通して接着する。



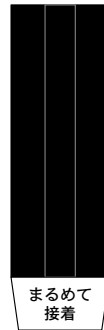
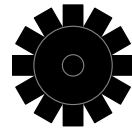
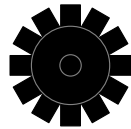
まるめて接着



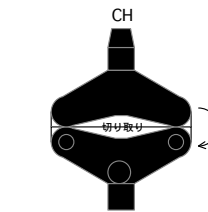
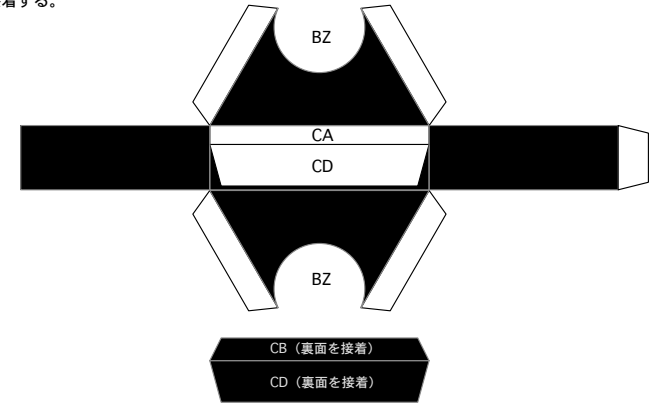
裏面どうしを貼り合わせる。



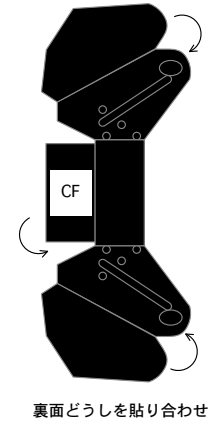
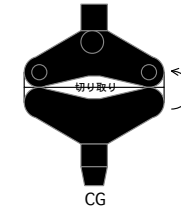
まるめて接着



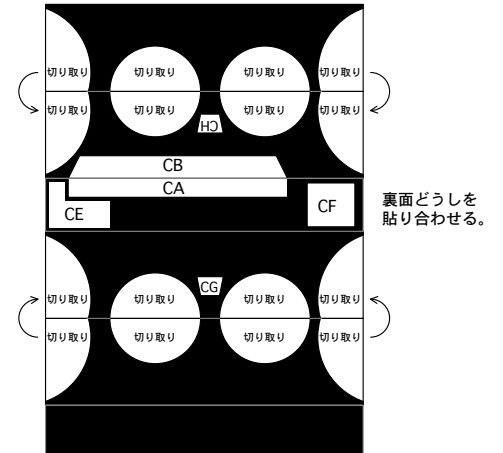
まるめて接着



裏面どうしを貼り合わせる。



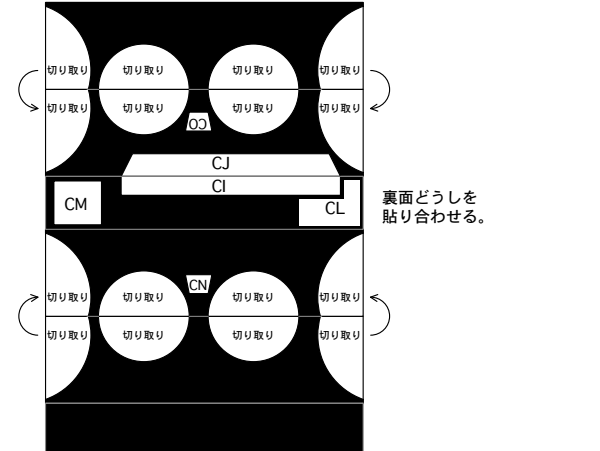
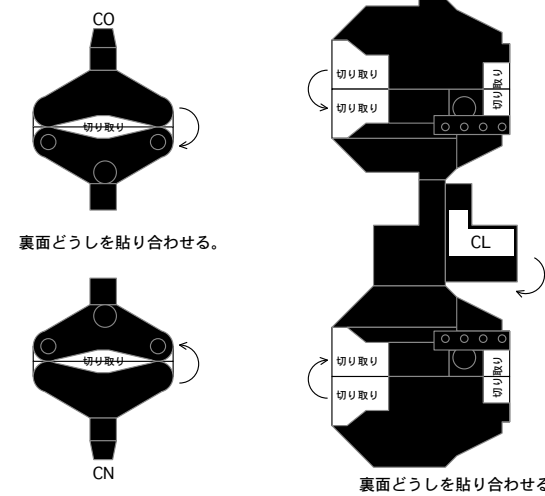
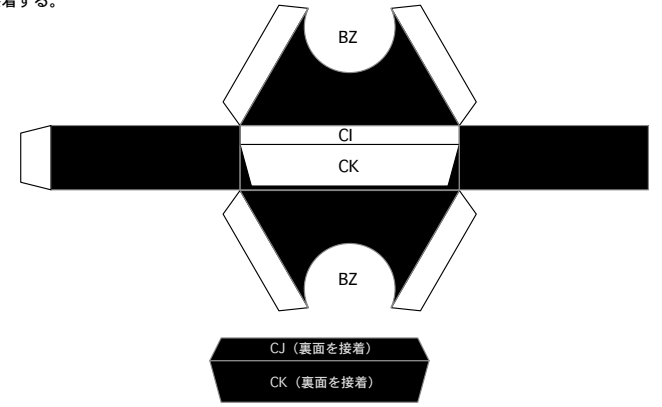
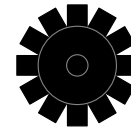
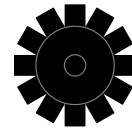
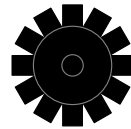
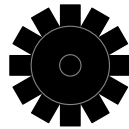
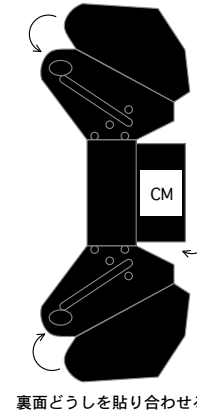
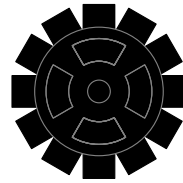
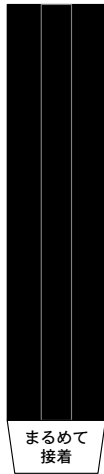
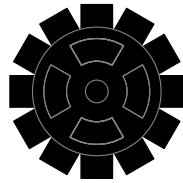
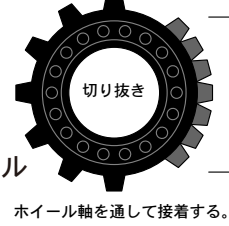
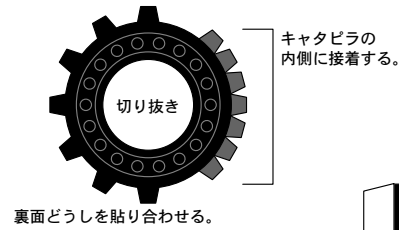
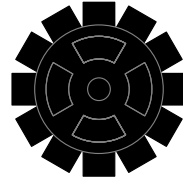
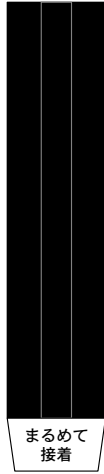
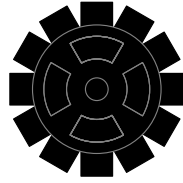
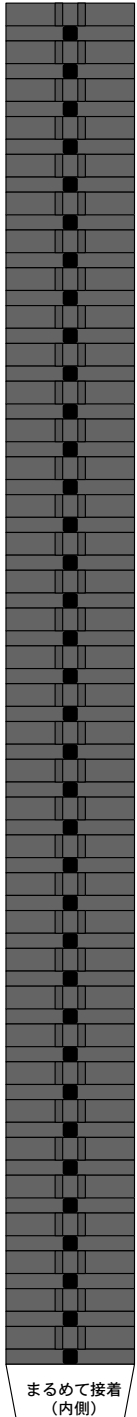
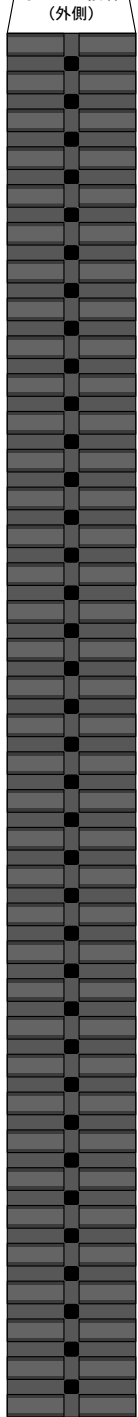
裏面どうしを貼り合わせる。



8

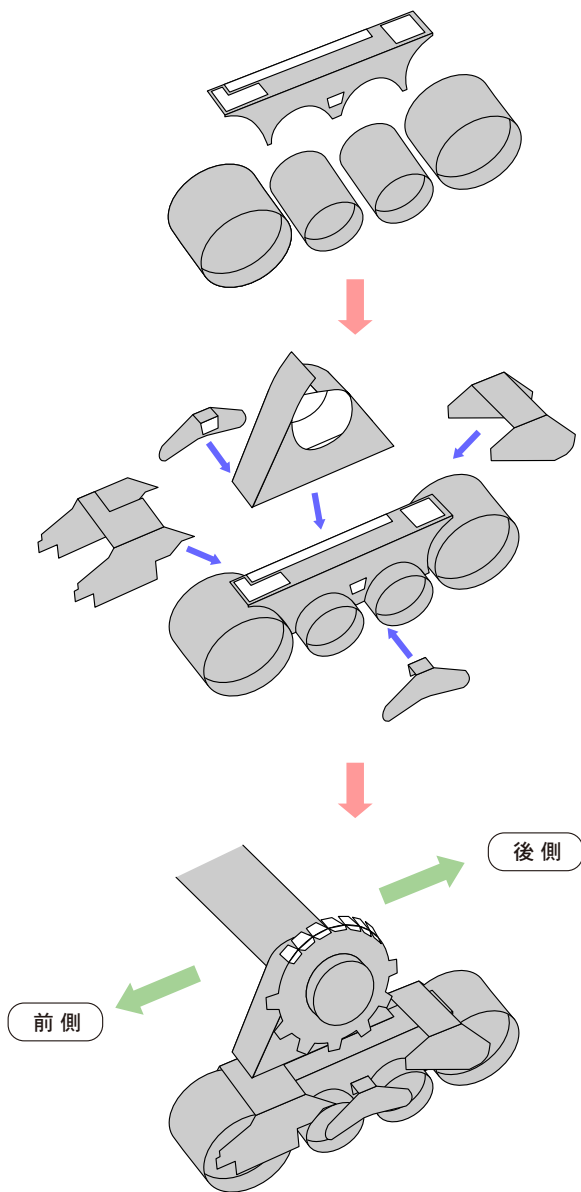
まるめて接着
(外側)

キャタピラとホイール (右)



9

ホイールの組み立て ※左側



ホイールの組み立て ※右側

