

Extended Residential Building

Armada Model Designs Ltd

RM02A-07

This is a model of an extended English semi-detached house dating from the turn of the twentieth century. It's scale makes it suitable for 15mm figures. If required, the kit can be brought into a computer-based graphics package and a mirror image produced, printed and combined with the original model to allow a complete semi-detached unit to be fabricated. A white card model is also included for builders who may wish to create their own colour schemes.

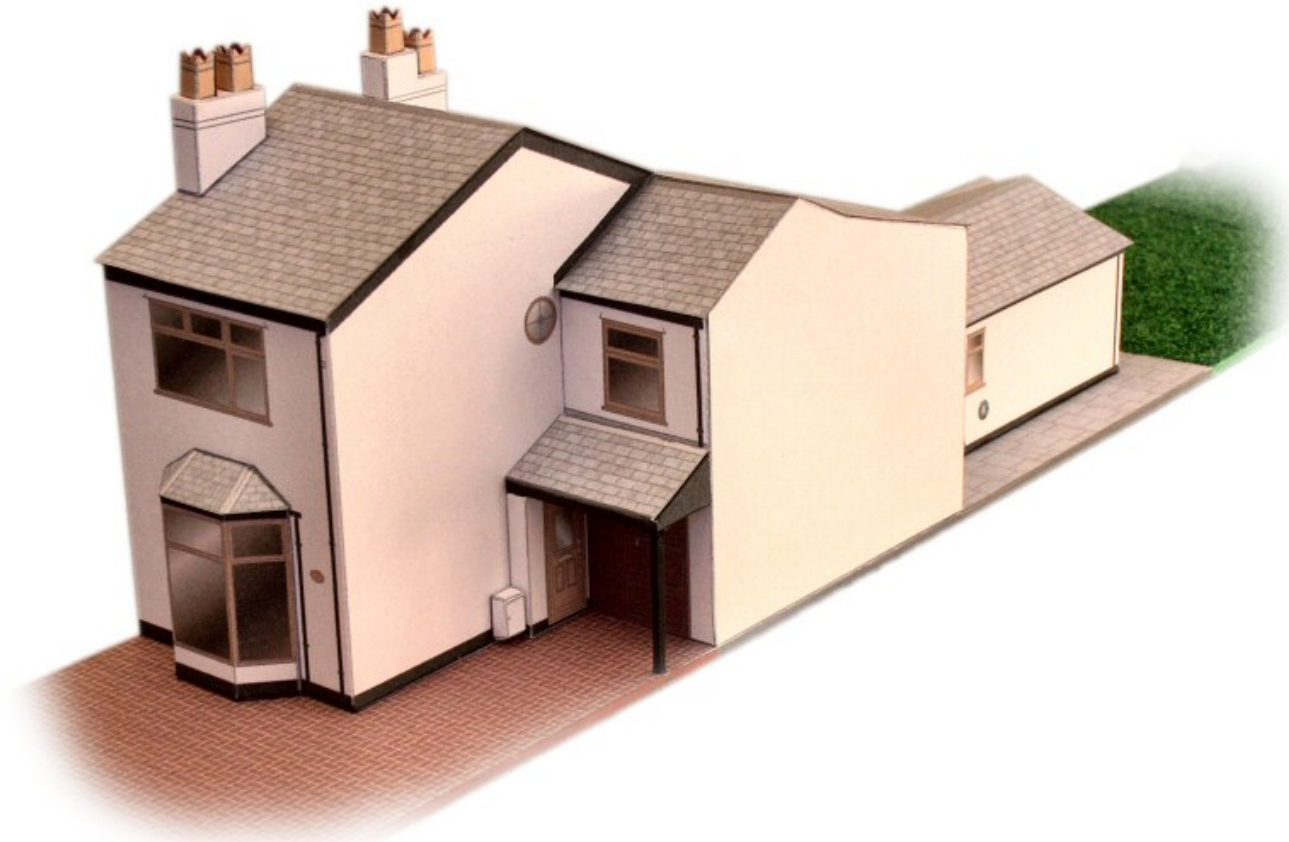
Instructions

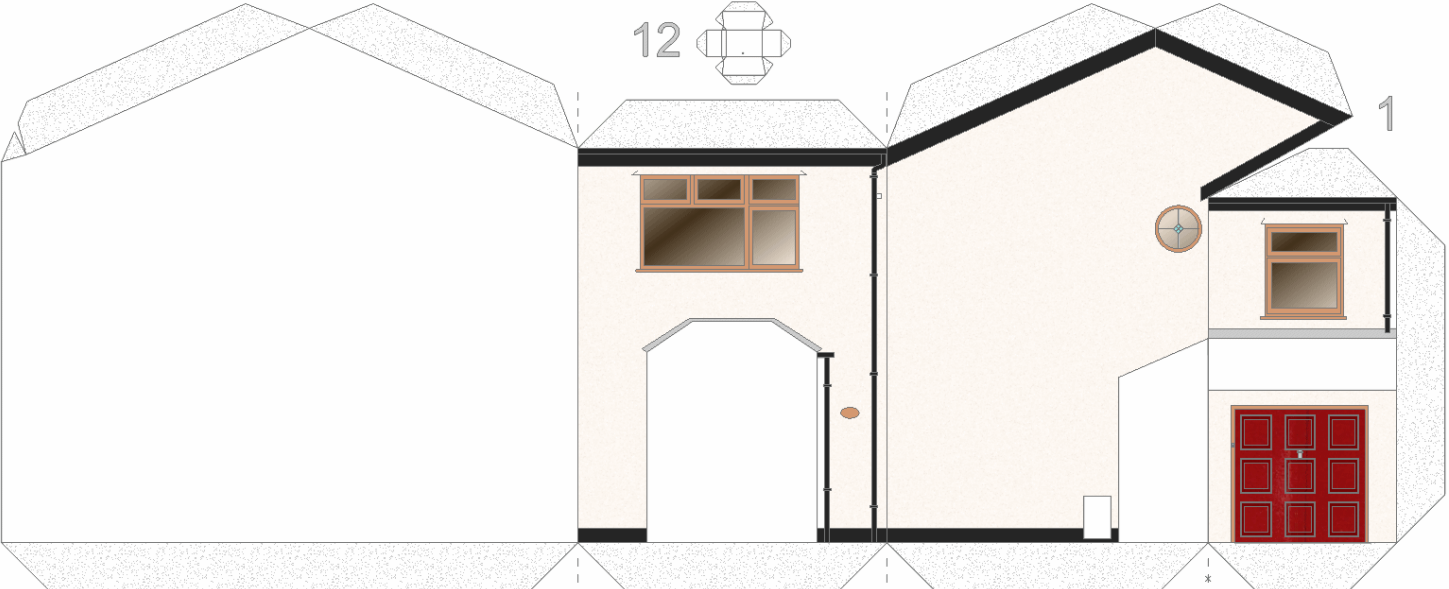
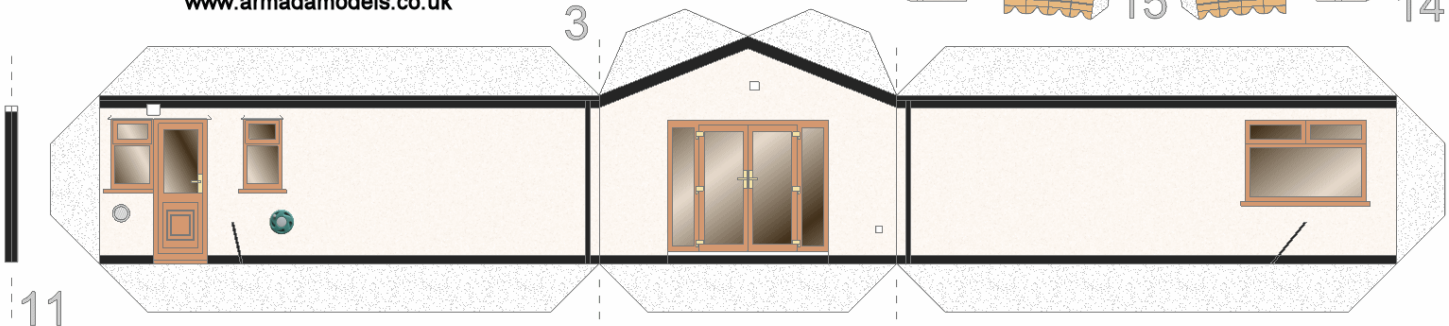
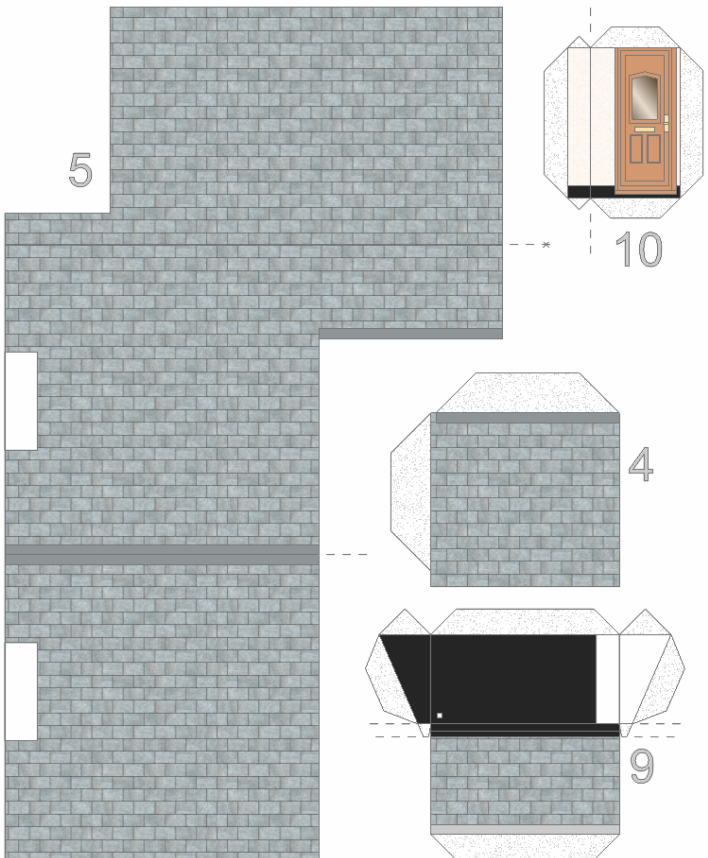
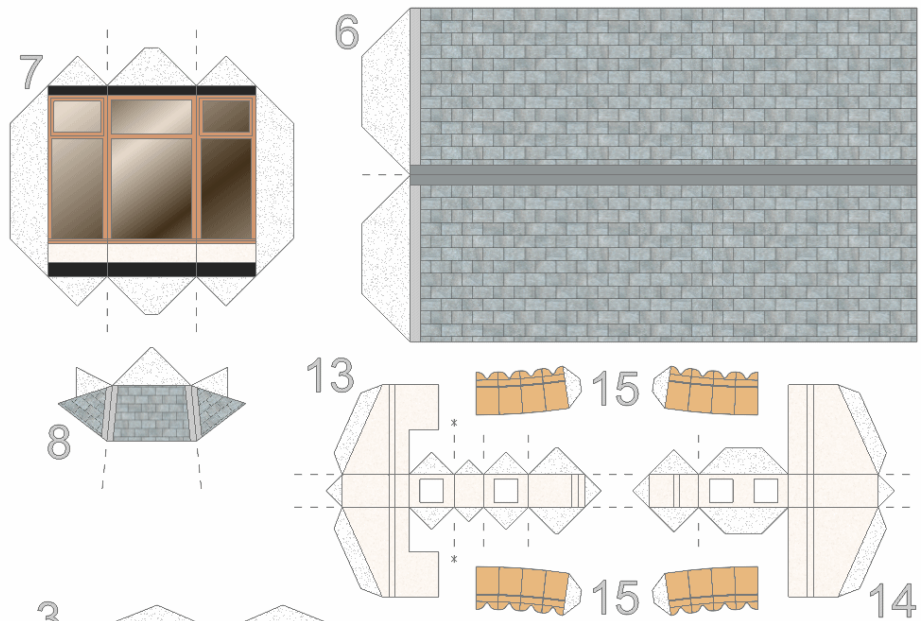
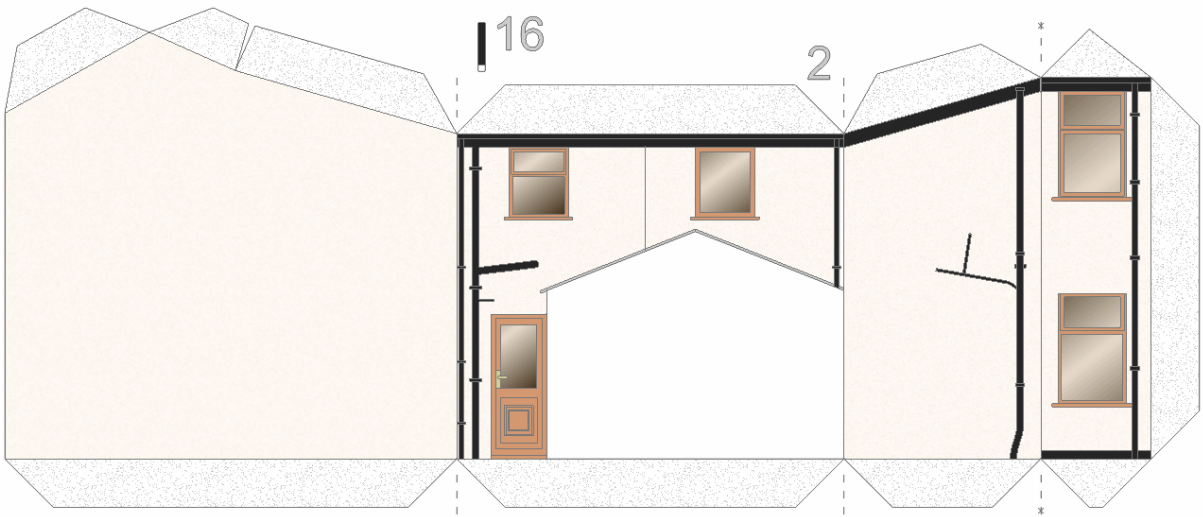
The tools required for card modelling (referred to as paper modeling in the USA) are generally to be found around the home. This model requires 2 sheets of 160 gsm white card, scissors or a knife to cut out the components, a ruler for scoring straight lines and some glue (PVA white-glue, used sparingly is best but Uhu, Bostick or even Pritt Stick will do). Careful scoring of fold-lines is the key to accuracy of shape. Score-lines can be made using a pin or perhaps a blunt craft knife.

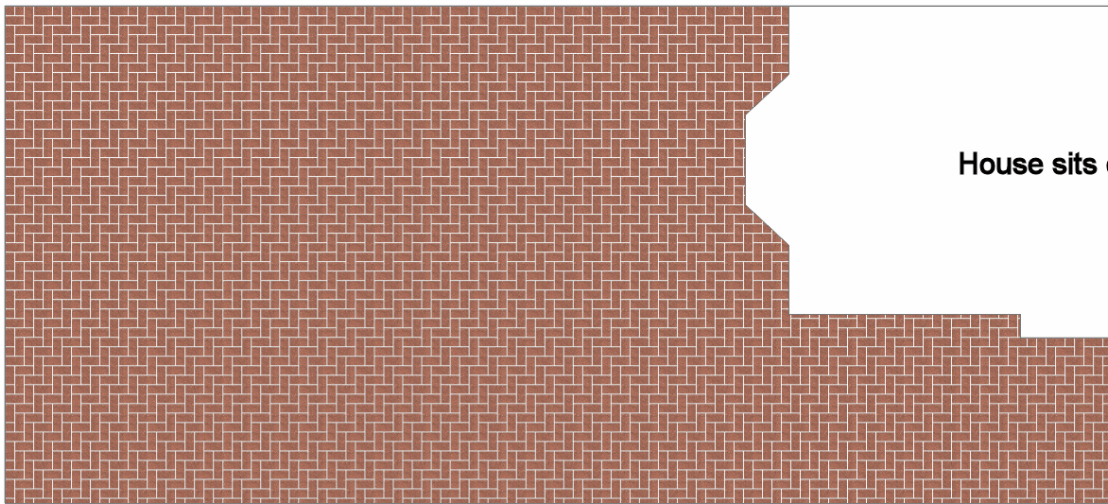
Build the model directly on its plot. To create a robust base, the card plot, including block paving and patio can be secured to a suitably-sized piece mounting board. The model includes an area of decking and a garden shed, along with suggested proportions for a garden.

Glue-tabs are denoted by a stippled pattern. All glue tabs should be scored and folded. Look at the images of the assembled items carefully. Fold lines will need to be scored first. Most components are folded back on themselves as viewed from the printed side (so-called crest folds). There are however, those that need to be folded in the opposite direction (so-called valley-folds).

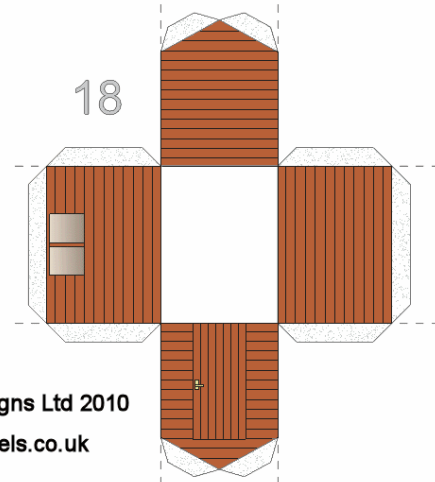
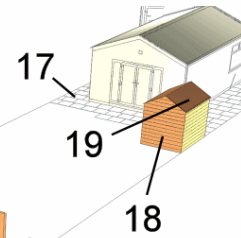
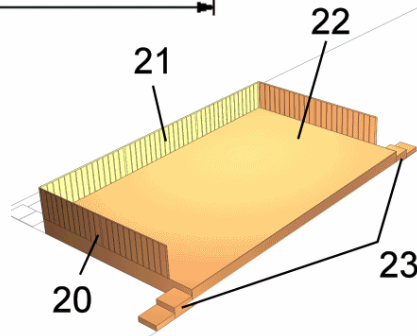
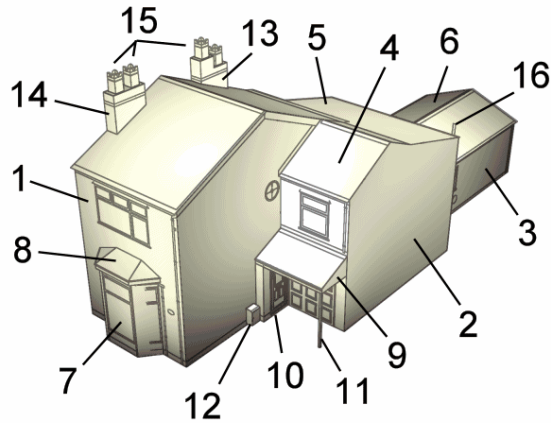
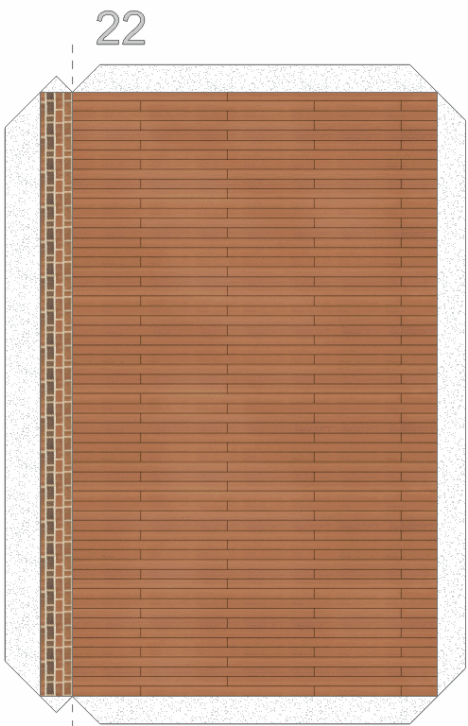
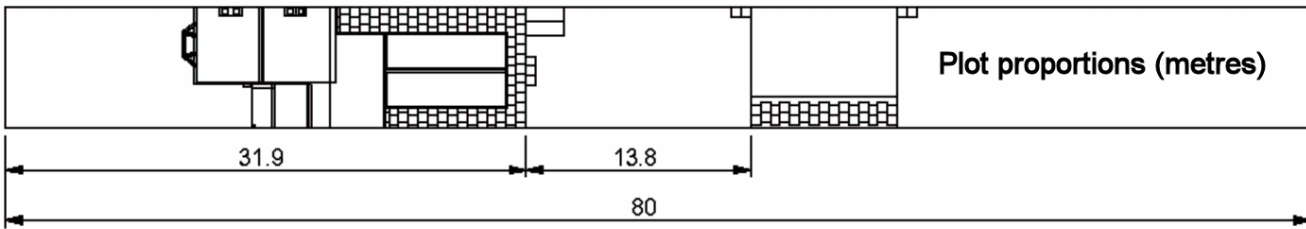
As with all card models the finished item can be enhanced by disguising the white edges with water colour paint.



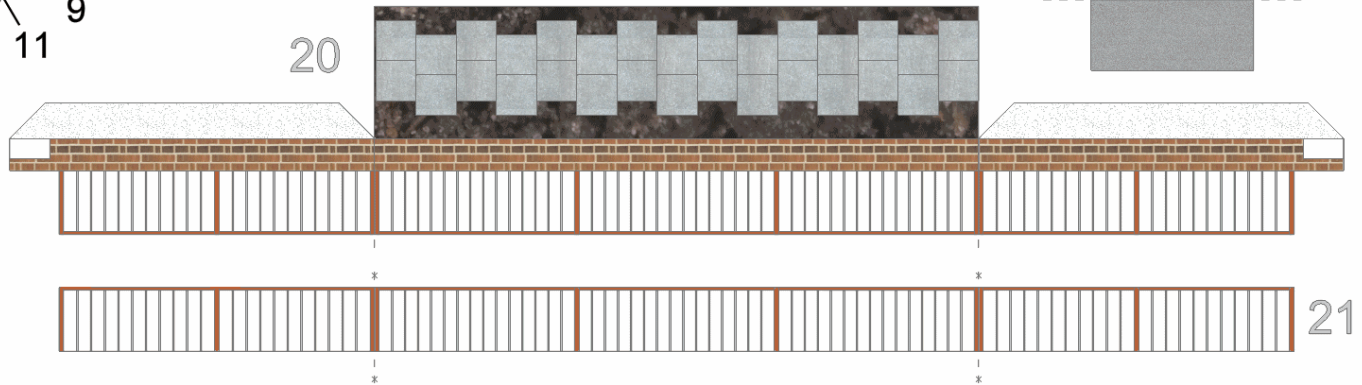
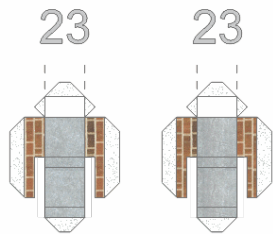




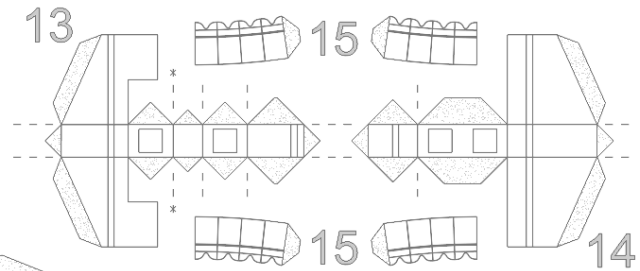
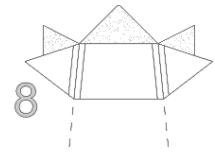
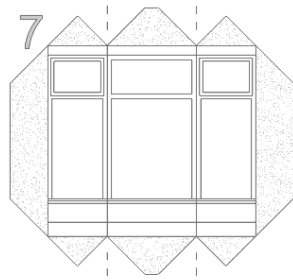
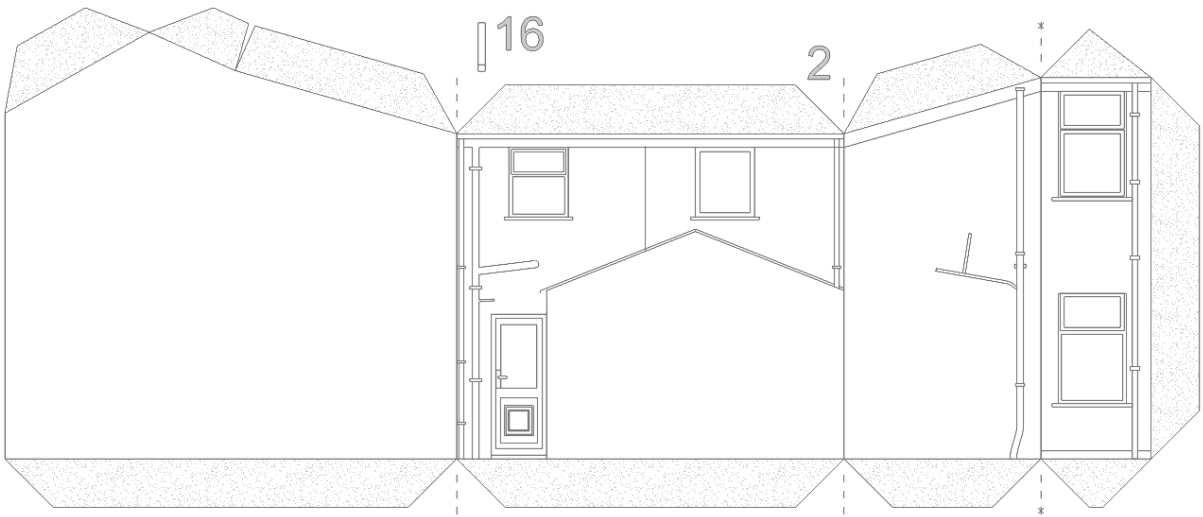
House sits on this plot



© Armada Model Designs Ltd 2010
www.armadamodels.co.uk

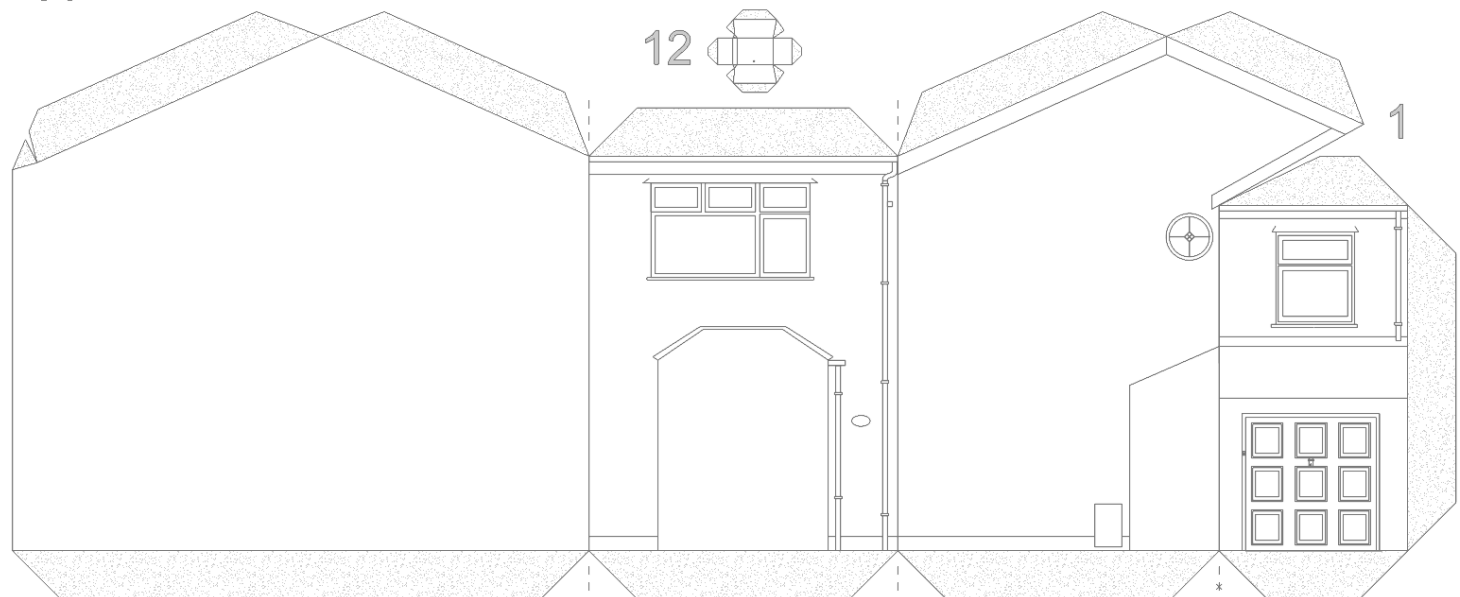
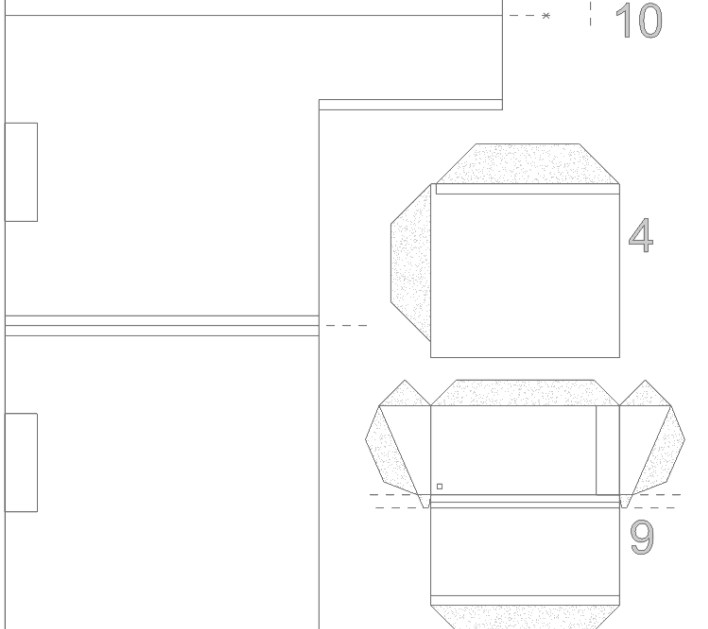
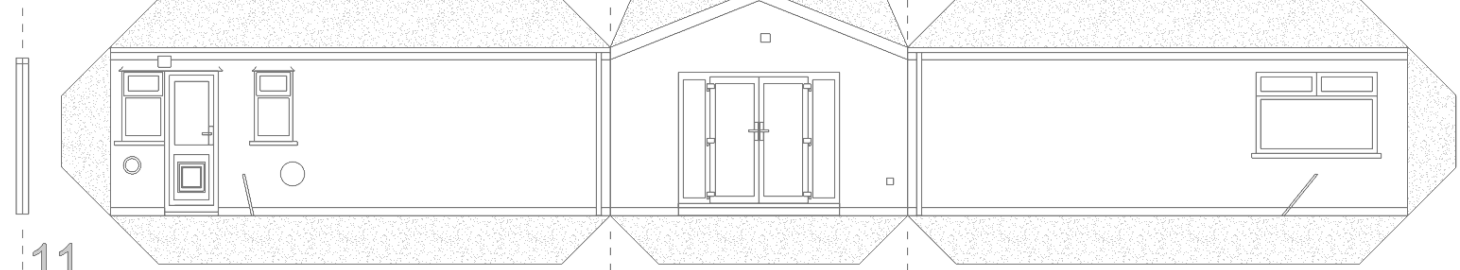
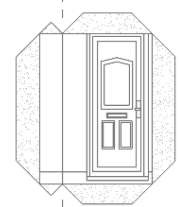
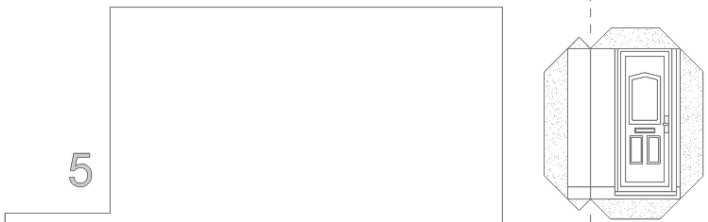


21



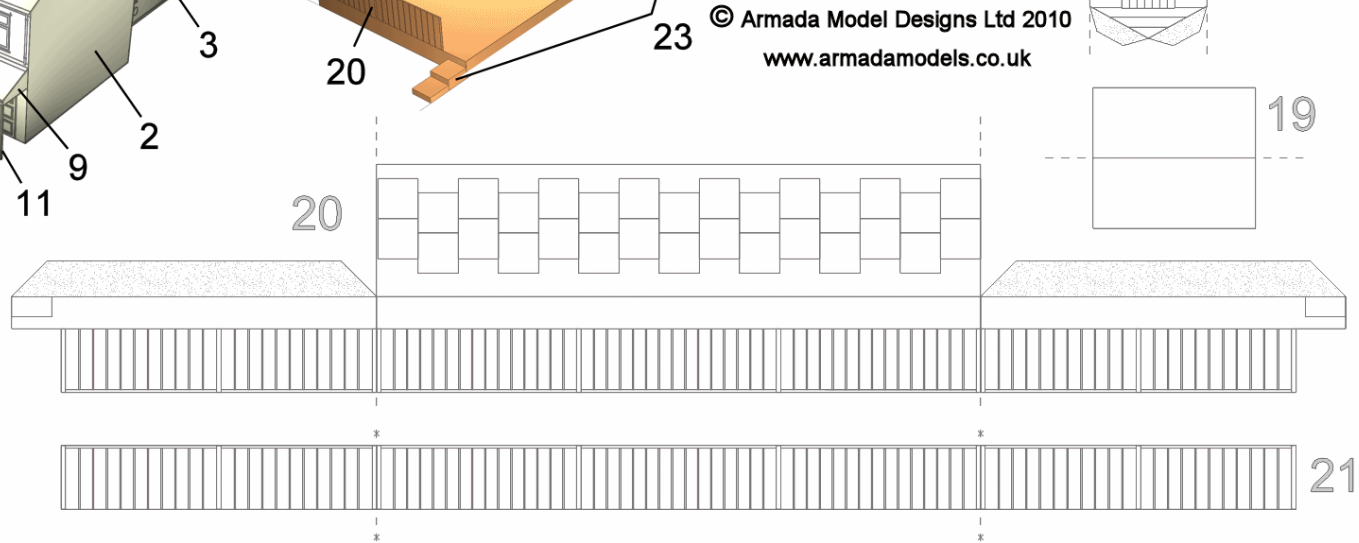
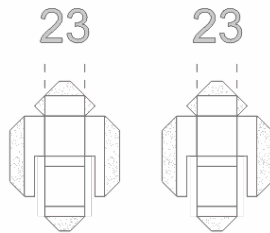
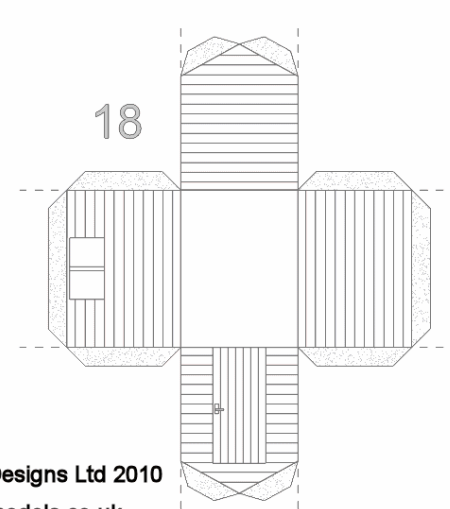
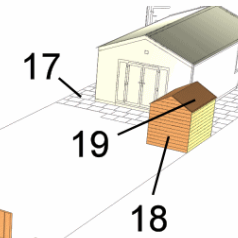
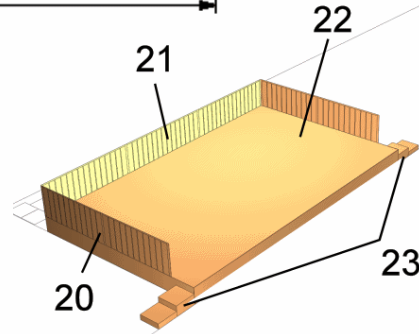
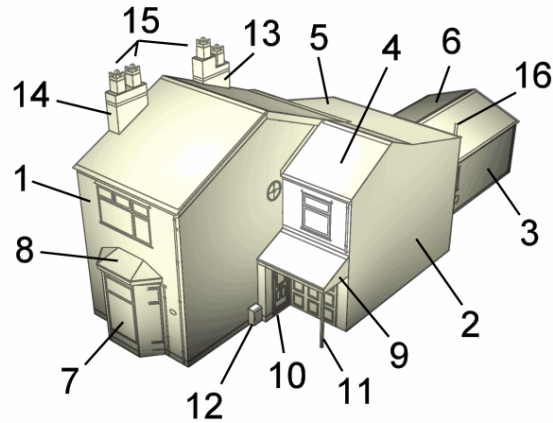
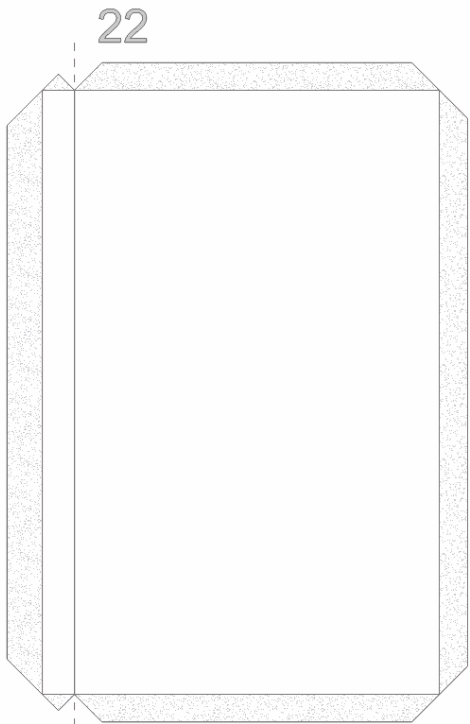
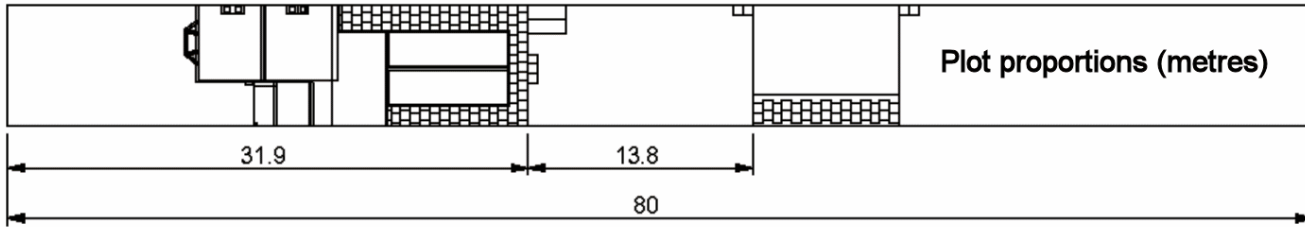
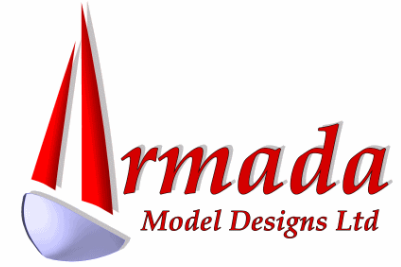
0 Scale 10m

© Armada Model Designs Ltd 2010
www.armadamodels.co.uk



1

House sits on this plot



© Armada Model Designs Ltd 2010
www.armadamodels.co.uk