

# Flying Spaghetti Monster

## Instructions

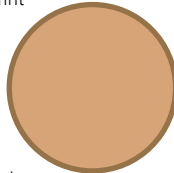
You will need a craft knife or other sharp knife, a pair of scissors, some glue and a glue spreader.

The best type of glue to use is white school glue (PVA.)

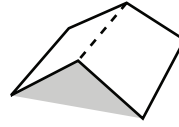
Print out the parts sheets onto thin cardboard. Photocopier card is ideal. Notice that the parts pages are marked front and back. Print out a front page, flip it over, then print the back onto the same sheet. Allow the ink to dry completely before continuing.

Before cutting anything out, score along all the dotted lines and cut out any holes with a craft knife. Both these jobs are easier to do on full sheets of card.

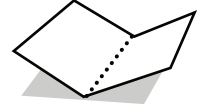
Dashed lines are hill folds, dotted lines are valley folds. Cut along the solid lines. Grey areas show where to glue



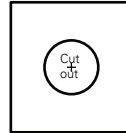
You'll need four coins about this size



Dashed lines are hill folds



Dotted lines are valley folds



Black lines show where to cut.



Shaded areas show where to glue.

**1**

Assemble the two meat balls with a paper-wrapped coin glued to the word 'coin' in each one. Match the orange and yellow halves.

Paper-wrapped coin

**2**

Glue the stand inner together (1).  
Glue the meatballs to the stand inner (3-5)  
Glue on the eyes (6)

**3**

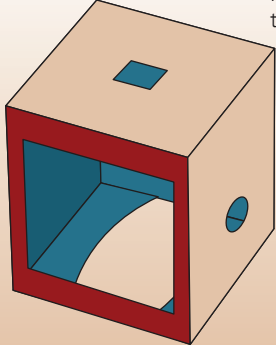
Glue the four tentacle pairs to the top of the stand inner. (7)

**4**

Assemble the stand middle and stand outer. (8 - 9)  
Thread them in place over the stand inner lining the blue dot to the back.  
Glue each of the thin tabs to a tentacle lining up the crease with the dot on the tentacle.



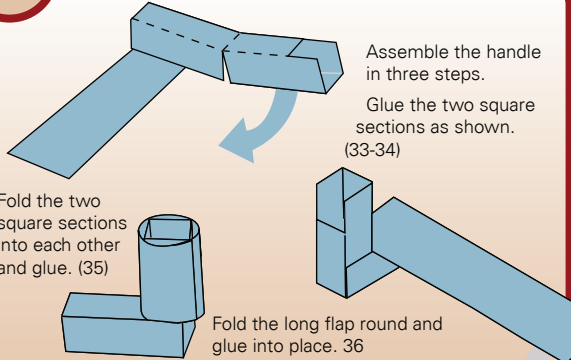
5



Fold round and glue the two box flaps (10-11)

Finish assembling the box. (12-23)

7



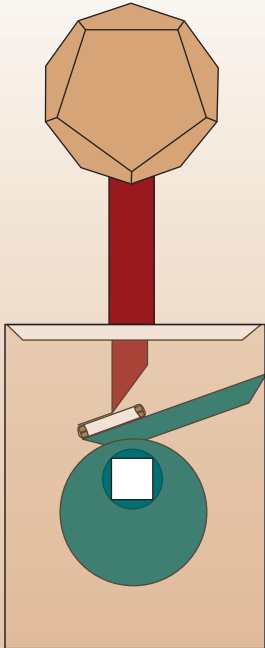
Assemble the handle in three steps. Glue the two square sections as shown. (33-34)

Fold the two square sections into each other and glue. (35)

Fold the long flap round and glue into place. 36

Glue the handle into place 37

6



Glue the stand outer to the box top (24)

Assemble and glue in place the two box stiffeners (25-26) so that they run front to back.

Assemble the cam follower (27) Glue the coins in the coin holder onto the cam follower.

Glue the flap from the middle stand to the top on the coins.

Glue the cam follower to the box (28)

Assemble the cam and cam shaft. (29-31)

Fit the cam into the box and glue on the washers (32)

Assembling the coin holder using two coins

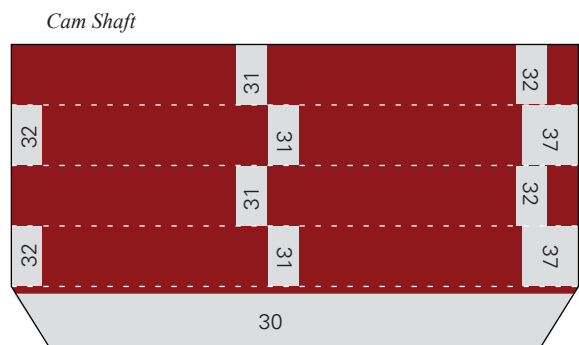
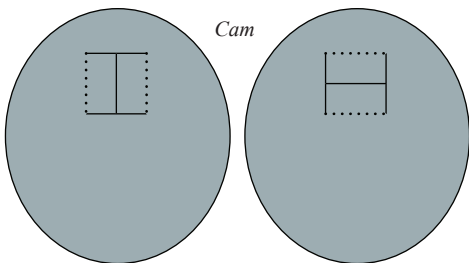
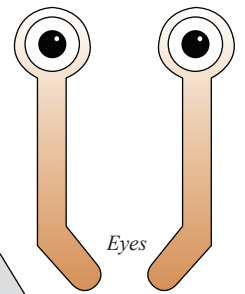
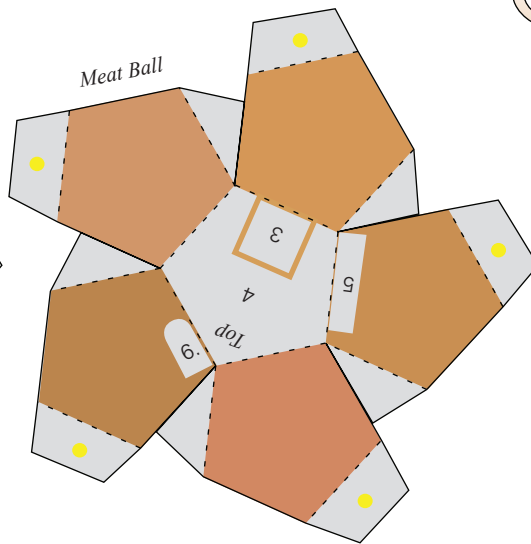
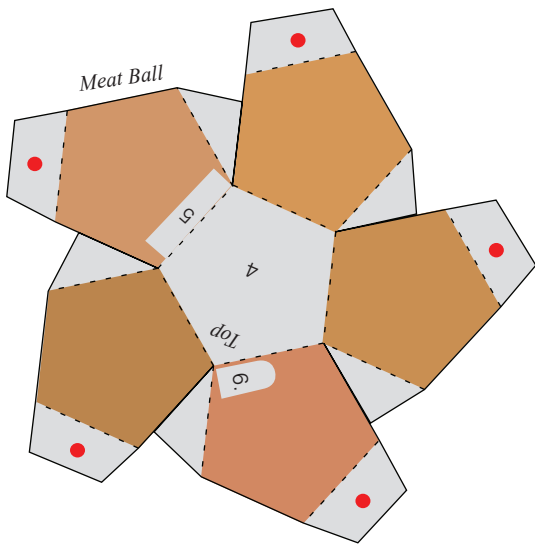
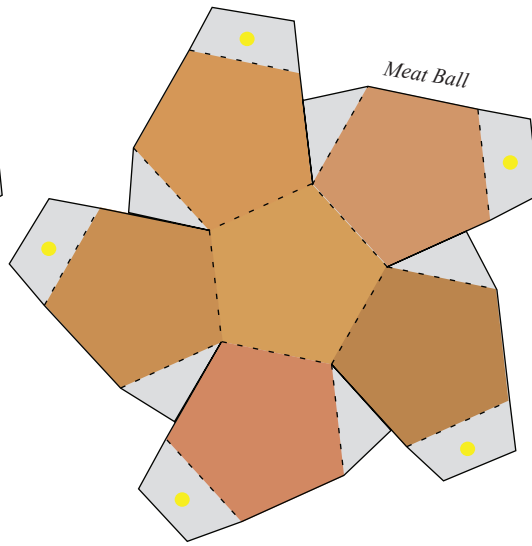
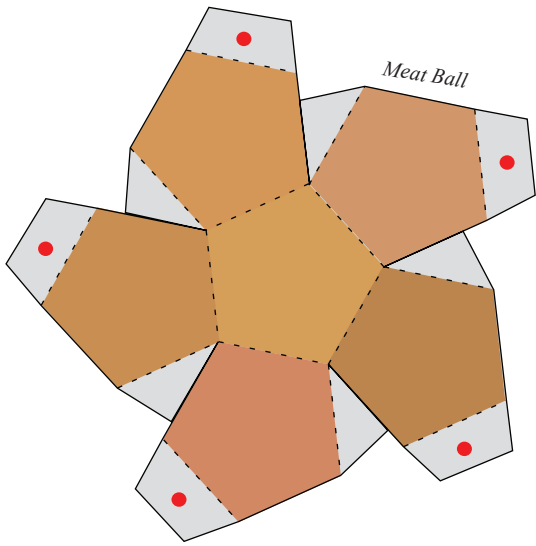


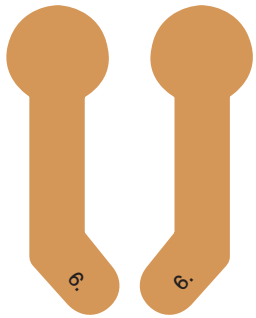
Wrap the spaghetti strips round the meat balls in an artistic way and glue them into place. You may need to put dots of glue along the length of the spaghetti to hold it into place.

Your Flying Spaghetti Monster is now complete. Turn the handle and watch him wave him noodly appendages.

Problem? Ask yourself "What would Flying Spaghetti Monster Do?"





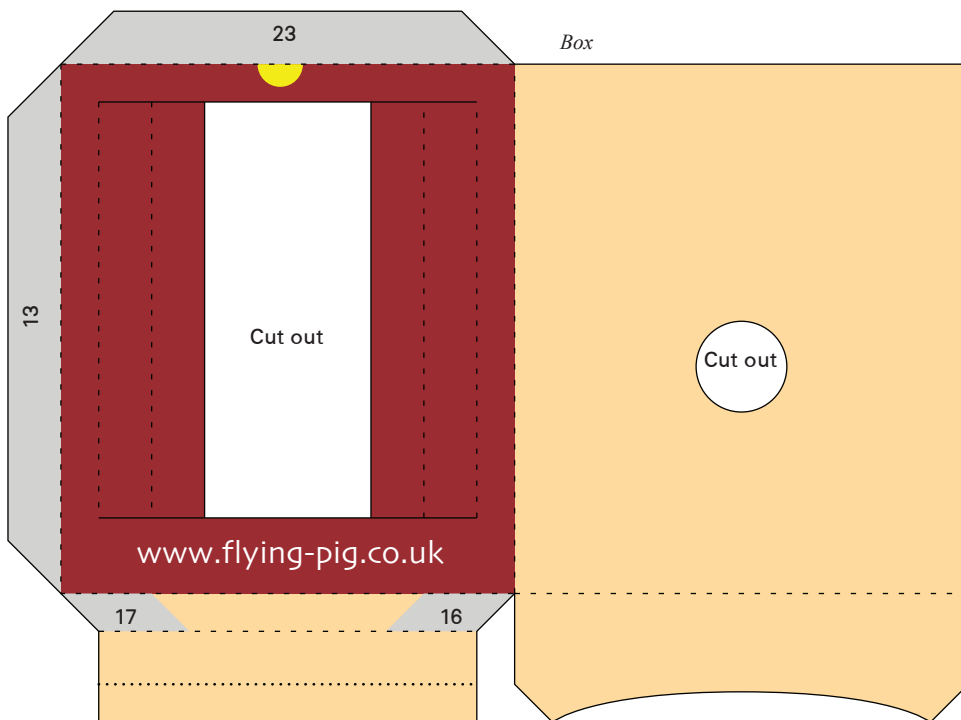
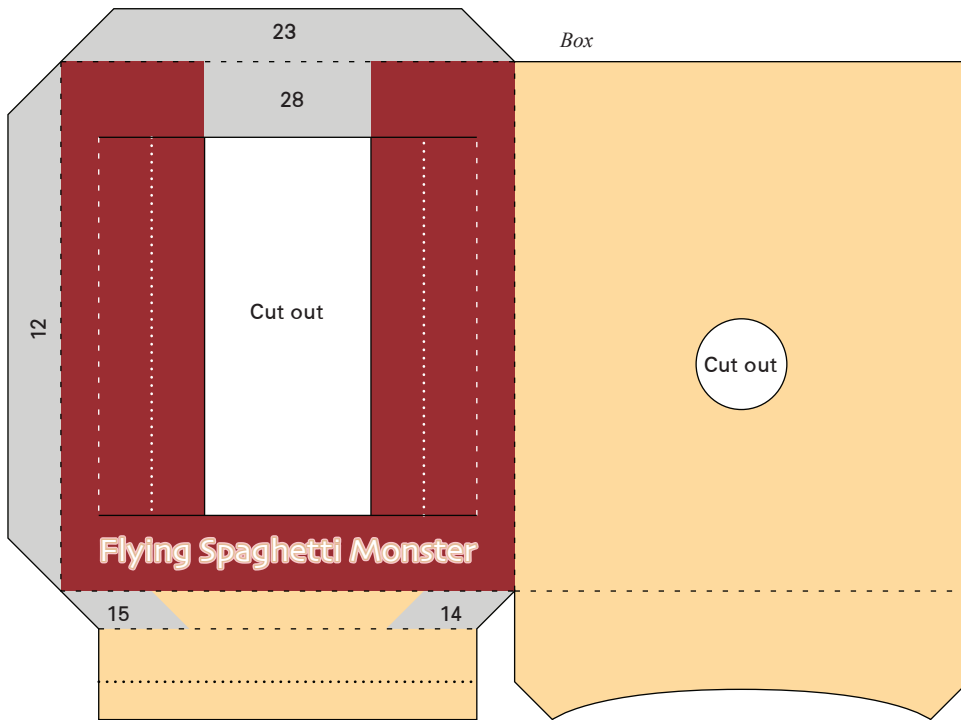


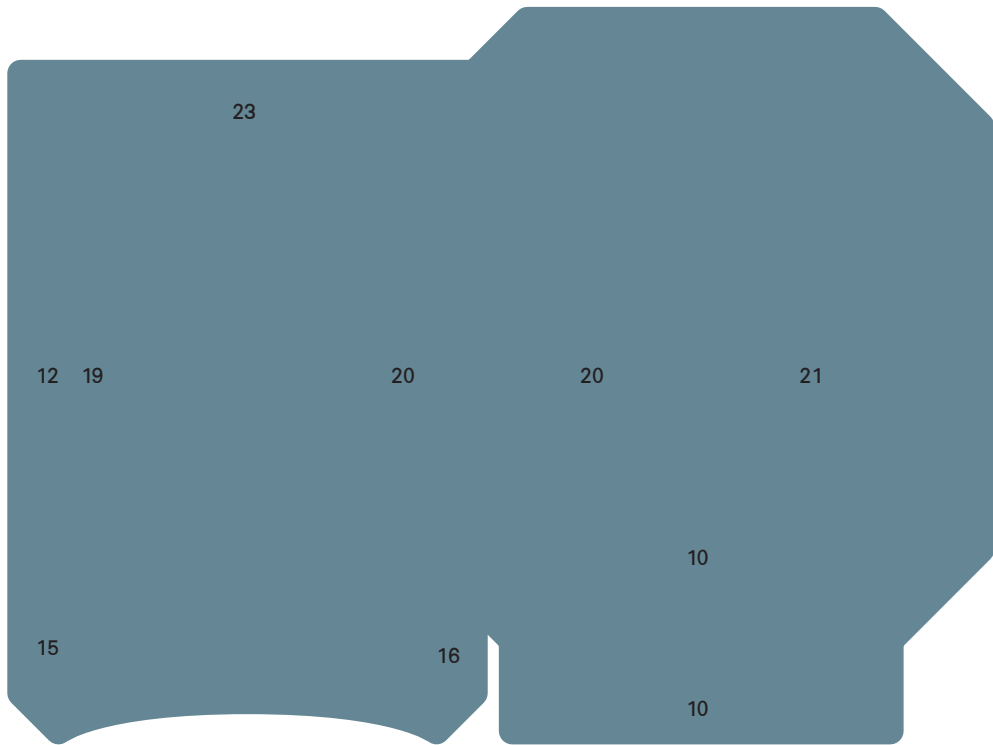
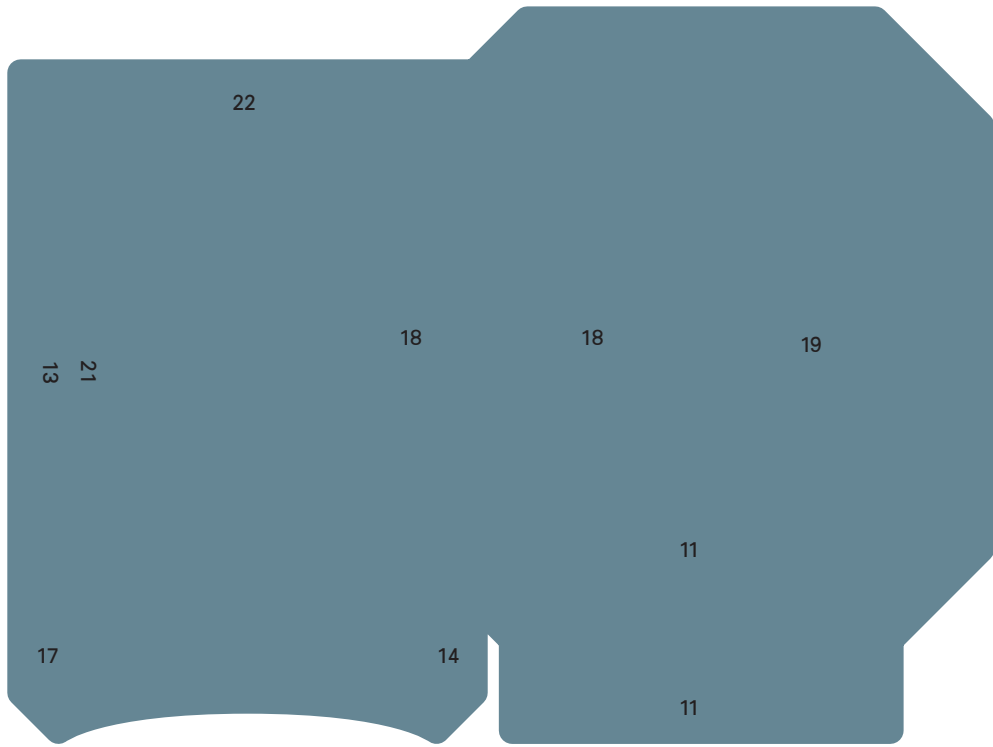
Coin

Coin

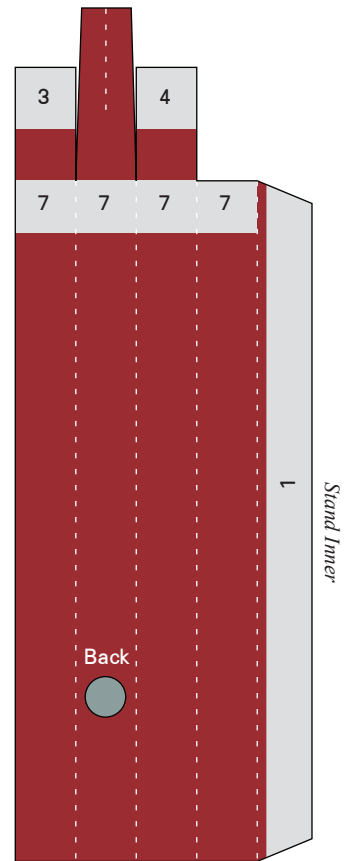
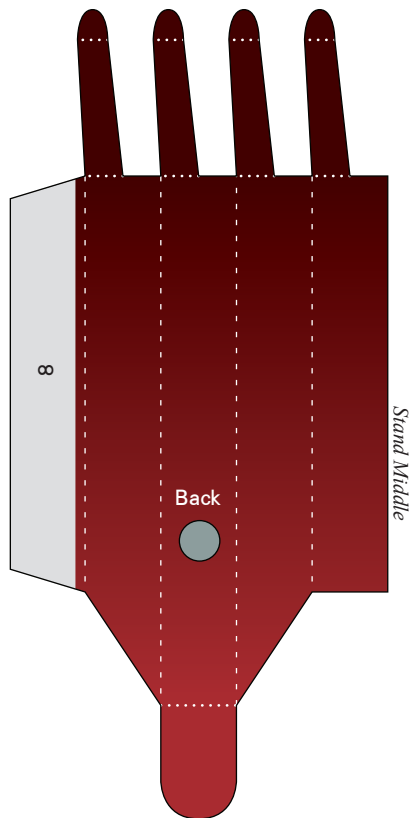
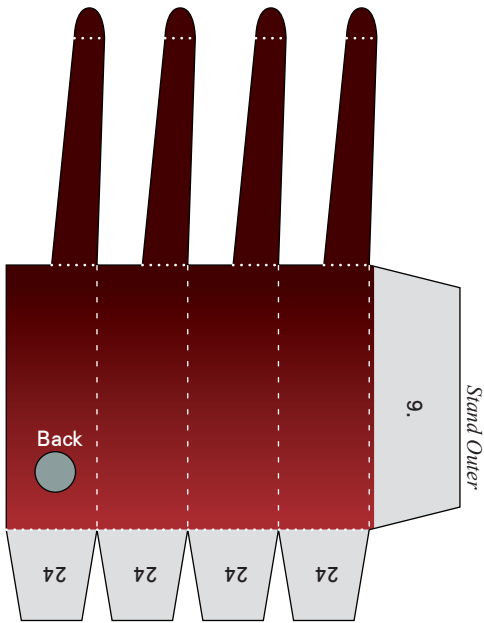
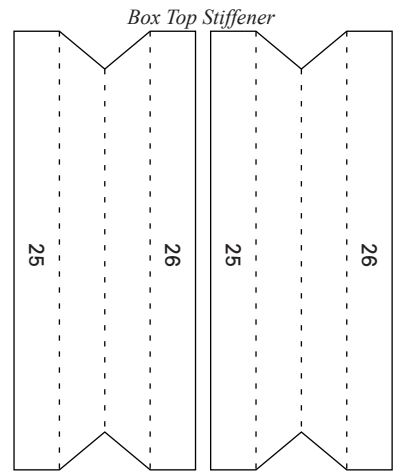
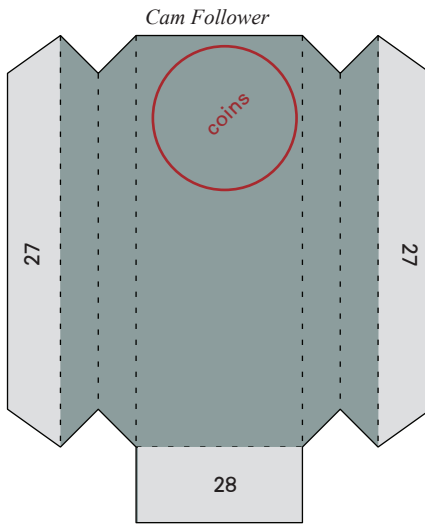
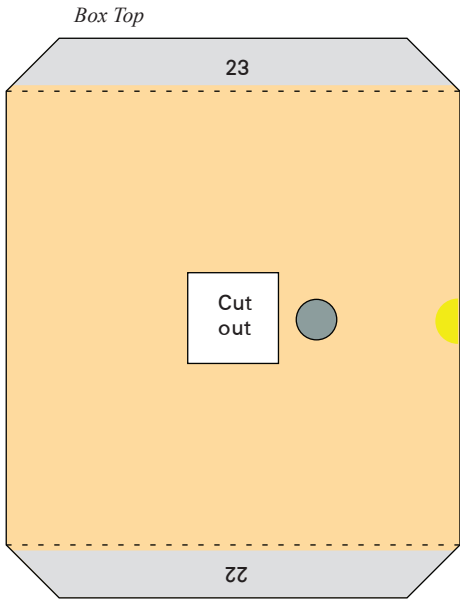


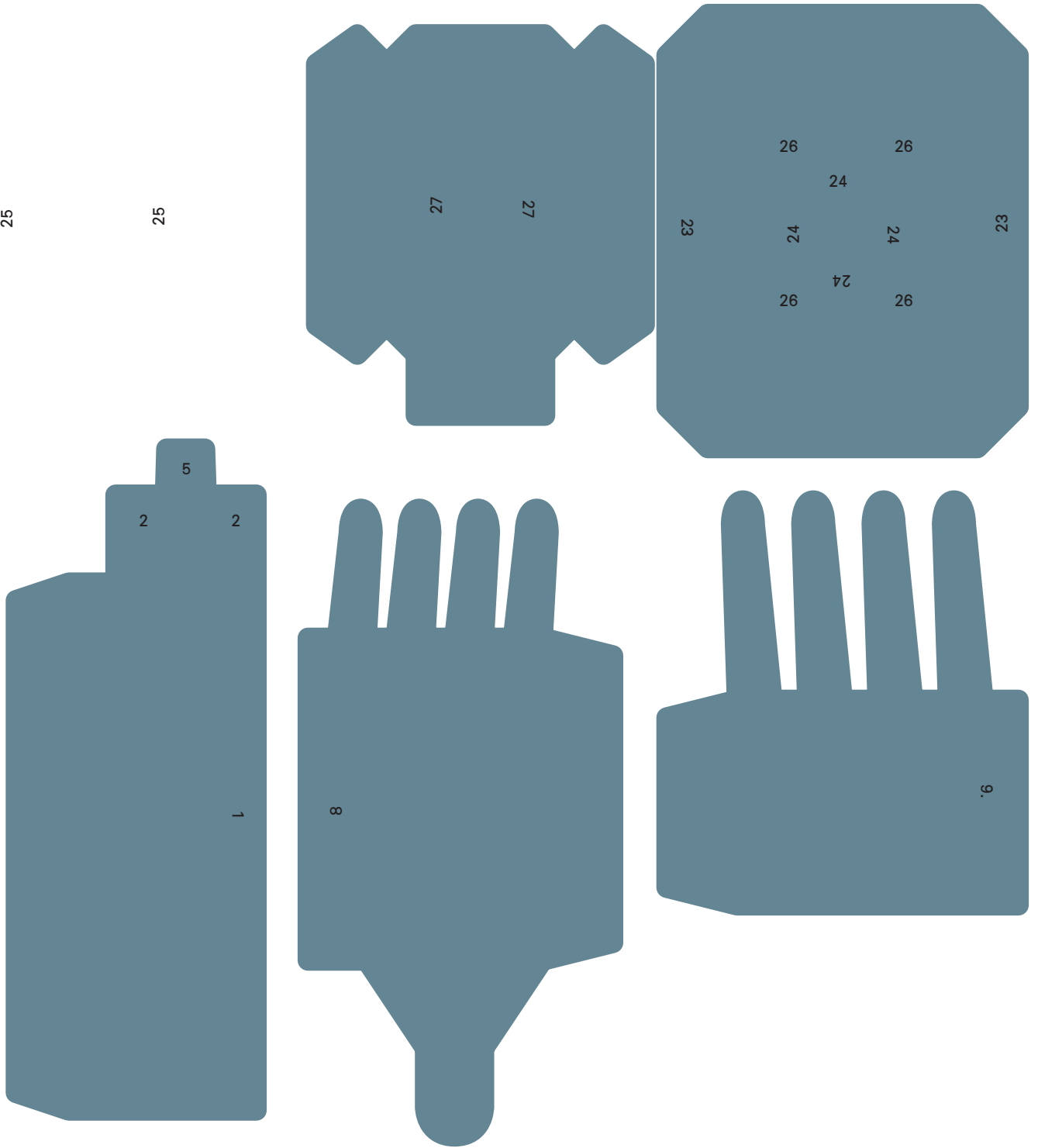
Flying Spaghetti Monster: Sheet 1 Back





Flying Spaghetti Monster: Sheet 2 Back





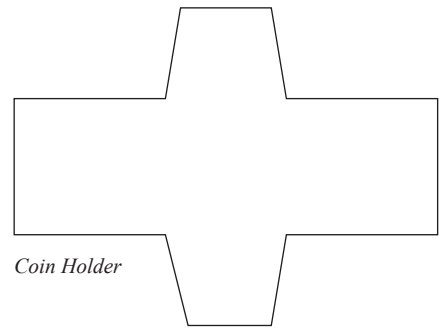
52

52

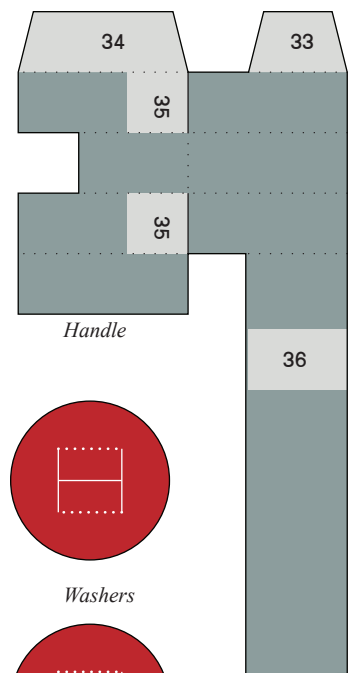
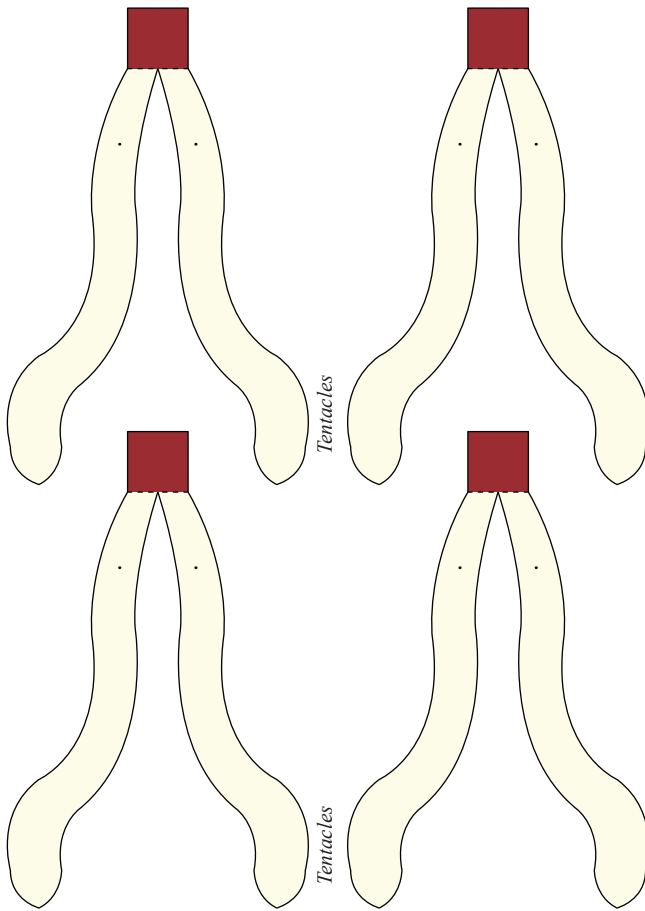




*Coin Holder*



*Coin Holder*



*Handle*

*Washers*

*Spaghetti*



